**QUANTIFIRE® XI**
2048x2048P

Research Grade Photomicrography

Quantifire® is a thermoelectrically-cooled progressive scan monochrome camera with a 500% increase in field of view developed exclusively for quantitative microscope image documentation and analysis.

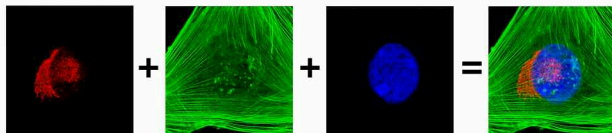
- **21.4mm Progressive Scan CCD**

Provides the microscope operator with the entire field-of-view digitally as seen through the microscope oculars and delivers exceptional image detail in challenging imaging applications with a wide dynamic range.

- **Automated Control of Optional CRI Macro Color™ Filter**

Adds versatility and performance providing full CCD pixel utilization generating a high resolution RGB image from your monochrome camera.

Optronics® Automated RGB 3-Pass Color



- **12-Bit CCD Monochrome Imaging**

12-bit high resolution monochrome images and increased sensitivity - crucial for a wide range of imaging applications including:

- Monochrome fluorescence imaging
- FISH
- Quantitative Brightfield and Darkfield imaging applications
- DNA analysis
- NIR imaging

- **Optronics Exclusive PictureFrame®**

Comprehensive image processing suite with measurement and annotation, scale bar, AVI file-compliant time lapse imaging, automated image archiving and real-time pseudo coloring with six position image mixing functionality, flat-field correction background subtraction, live frame averaging with motion compensation, report generation, meta data and more.

- **Intuitive User Interface**

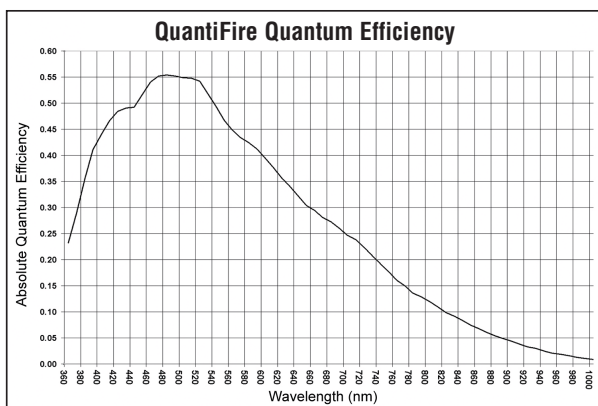
Powerful software – simple interface means images are captured effortlessly with Optronics point and shoot simplicity.

Technical Specifications

QUANTIFIRE[®]XI

Mechanical Specifications:	(L x W x H): 5.4 x 5.4 x 5.0 Inches
CCD Array:	2048 x 2048 pixels
Pixel Size:	7.4 x 7.4 micron pixels
Well Depth:	40,000 electrons
Active Area:	15.2mm x 15.2mm, 21.4mm diagonal
Cooling:	Thermoelectrically cooled to 20° below ambient
Computer Interface:	IEEE 1394 (FireWire [®]), 6 pin
Software:	Optronics [®] native application PictureFrame [®] , SDK available, Twain, Rincon [™] , Longboard [™]
Optical Interface:	F-mount
Electronic Shutter:	Integration time to 20 minutes
Frame Rates:	5 FPS @ 2048 x 2048 9 FPS @ 1024 x 1024 (2x2 binning) 12 FPS @ 680 x 680 (3x3 binning) 15 FPS @ 512 x 512 (4x4 binning) 18 FPS @ 408 x 408 (5x5 binning) 38 FPS @ 64 x 64 (subframed mode)
Binning Modes:	1 x 1, 2 x 2, 3 x 3, 4 x 4, 5 x 5
Subframing:	64 - 2048 lines x 64 - 2048 columns
System Recommendations:	PC - 1 GHZ or better PC Running Windows [®] /2000/XP/Vista 32-bit color 512 MB Ram MACINTOSH - G4 OS X Version 10.2 or better 512 MB Ram

Spectral Response Curve:



Warranty: 2 Years

RGB Color Imaging Requires Optronics[®] CRI Macro Color[™] Mount p/n S61353



Windows
Vista
Compatible



FireWire[®] is a federally registered trademark owned by Apple Computer Inc.

Kodak[®] is a federally registered trademark of Eastman Kodak Corp.

Mac and the Mac logo are trademarks of Apple Computer, Inc., registered in the U.S. and other countries.

Microsoft, Windows, and the Microsoft logo are trademarks of Microsoft Computer, Inc., registered in the U.S. and other countries.

Monitor is for illustration purpose only. Sold separately.