



Leica ICC50

Share, Capture and Archive Images
with the New Integrated Camera System

Living up to Life

Leica
MICROSYSTEMS

Fast, Easy Imaging

The ability to share, capture, and archive images is an important part of the science laboratory. The new Leica ICC50 digital camera offers an economical, modular solution for science education.

Leica ICC50 Camera Module

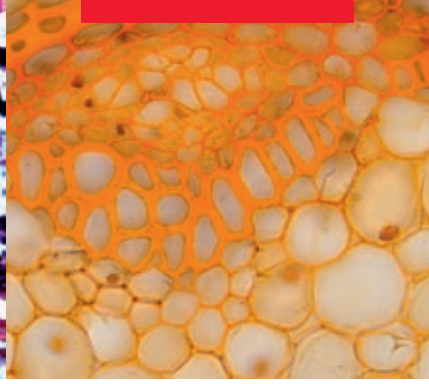
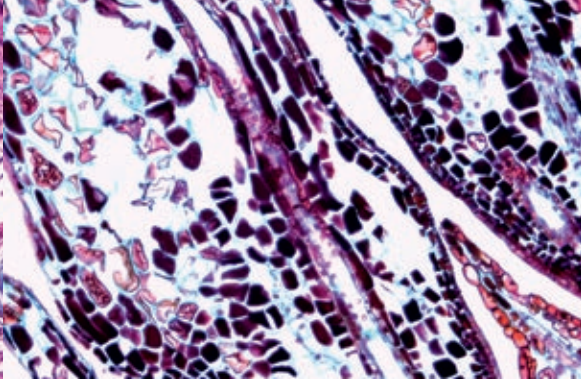
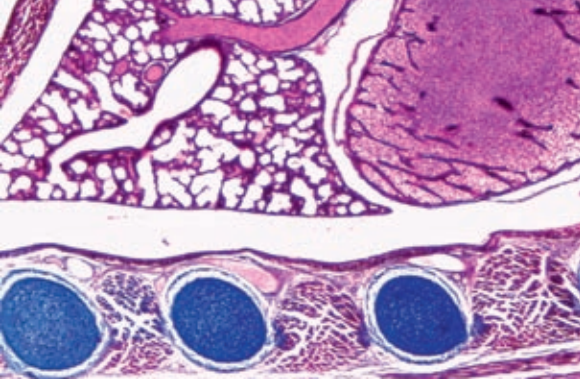
- Fits between the viewing tube and microscope stand for the best system integration and alignment
- 3 megapixel CMOS sensor for high resolution, fast live images
- USB output for direct connection with a computer; also provides power to the Leica ICC50, which eliminates an additional power cable
- Stand alone kit for use without a computer, capture images directly onto an SD memory card or use the analog output for direct connection to a projector
- Simultaneous live PC video, and analog video when using an analog display, for presentation while using a PC for capturing and annotating images
- Reset feature returns the camera to its default settings and can be used to reset the white balance
- Modular system allows easy upgrades and service

Includes Leica Application Software (LAS) EZ software for easy camera control, capture, and annotation

- Intuitive workflow-style user interface minimizes time for imaging tasks
- Define image acquisition preferences such as exposure, gain and gamma
- Image related data and calibration are stored with the image for later reference
- Save and view images in a thumbnail gallery, or in your own files
- Save and open images directly into any other software application
- Fast live imaging makes setting up image acquisition quick and easy
- Add basic measurements or annotations to the stored image

The Leica ICC50 is compatible with the full range of Leica Microsystems Imaging Software Modules.





Leica ICC50 Specifications

Weight	700 g (camera only)
Exposure time	2 msec – 2 sec
Live picture	Up to 15 fps (1024×768 pixel)
Full frame image capture	2048×1536 pixels, 3.1 Mpixel
Sensor Size	6.55 mm×4.92 mm
Pixel size	3.2 μm×3.2 μm
Sensor type	Micron 1/2" CMOS
Gain	1× to 20×
Color depth	24-bit
Data format	JPEG / TIFF / BMP
Operating systems	Windows XP, Windows Vista
Software	Leica LAS EZ software (PC), Leica LAS modules (optional)
Recommended computer configuration	Intel Pentium 4 or DuoCore, 2GHz, 1GB RAM 24-bit graphics, 1248×1024 CD-ROM drive

Mechanical and Optical Interfaces

Fits between viewing tube and atand via standard Leica Microsystems dovetail	
Center offset of the top dovetail to the bottom	< 0.4 mm
Light distribution	Optical 50% / Camera 50%
Prism	No reflections, dust or impurifications visible
Internal video magnification	0.5×
Sensor	Centered to optical axis ±0.1 mm Horizontally / Vertically aligned ±1 degree

Electronic Interfaces

Compatibility	USB 2.0 mini plug female
Analog video port	RCA connector with composite video signal PAL or NTSC (default)
Pinhole	Switch to select between PAL or NTSC video mode
2 color LED	Power on (green) / Ready to acquire (green) / Recording (red)
Integrated slot	SD (Secure Digital) card
Recording	Switch for image capture
Reset feature	Press the recording switch for more then 5 seconds
Set new white balance	Press the recording switch for more then 10 seconds
Power consumption	4 W

Other

Power supply	Via USB 2.0
External Power supply	Optional
Operating temperature range	+5 °C to 50 °C; humidity 10 to 90%
CE conformity	Declaration available
cULus	
Approved standards	EMI/RFI EN55011-B EN50082-1 EMC 61000-3-2 61000-3-3

Ordering Numbers

13 613 705	Leica ICC50 camera (incl. USB cable and LAS EZ software)
13 613 710	Leica ICC50 stand alone kit (power supply, video cable, SD card)
13 613 705-100	Leica ICC50 replacement user documents