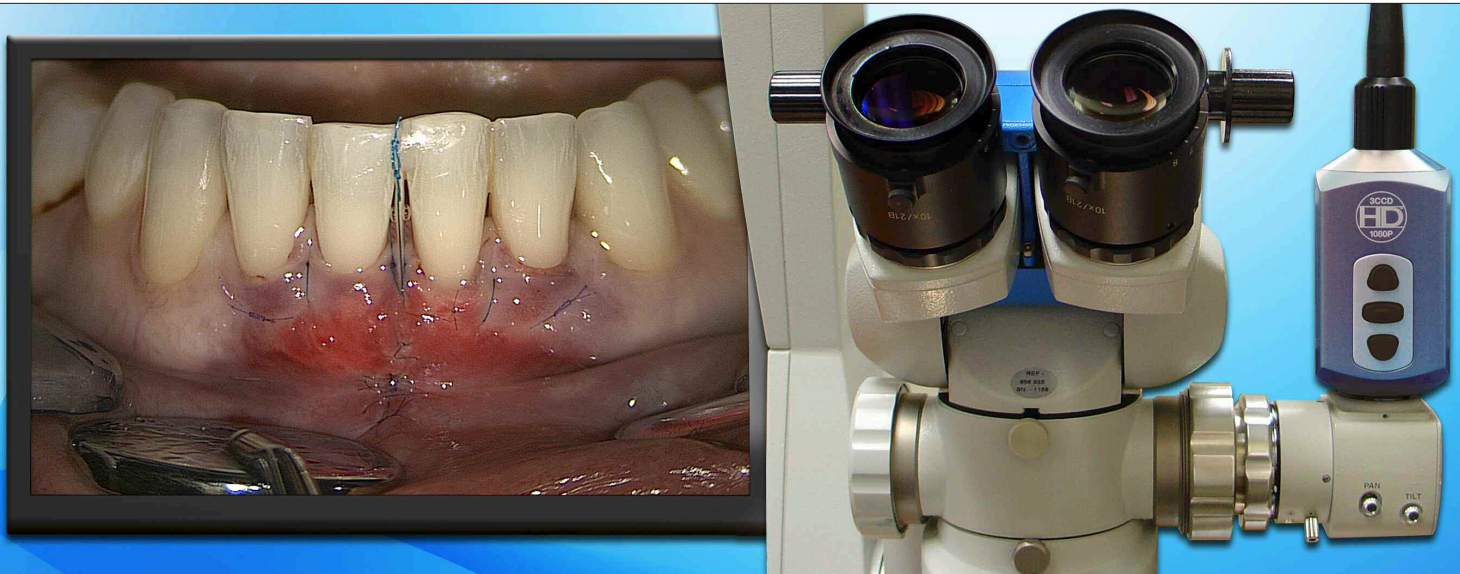




MICROCAST® HD Studio™

Full High-Definition Dental Surgical Microscope Camera System



Digital
Co-Observation

Microcast® HD Studio™ is a certified medical grade high definition microsurgical imaging system developed for the needs of dental microsurgery.



Presentation

The full-high definition camera system produces uncompressed 1920x1080p images with superior color accuracy, detail and depth perception of microsurgical fields. Microcast HD Studio, captures full HD stills and publication quality progressive scan MPEG 4 (H.264) video without a computer.



Capture



Record



Publish



Technical Specifications

Microcast HD Studio Camera System:

HD Camera Type:	Full High-Definition Progressive Scan (Non-Interlaced)
Image Sensors:	3CCD (16:9 Format)
HD Resolution:	1920 x 1080p
Frame Rate:	59.94 fps Full-Resolution (50Hz/60Hz)
SNR:	60dB
Optical Mount:	C-Mount
Exposure:	Automatic / Manual
Shutter:	Electronic 1/10000 – 1/60 sec.
Gain:	+2, +4, +8, Max
White Balance:	Automatic / Manual
Scene Files:	(8) User Programmable Specialty Settings (Keypad or Menu Accessible)
Digital Processing:	14bit
Brightness:	Level 1-15, Max
Digital Enhancement:	Off, Low, 1-5, High
System Control:	Programmable Keypad, (3) Tactile Head Buttons
Image Capture:	One-Touch Programmable Hot Key
Record Video:	One-Touch Programmable Hot Key
Print Image:	One-Touch Programmable Hot Key
Camera Head Cable:	9' or 30', Removable (Specify at Time of Order)
Language Settings:	English, Deutsch, Espanol, Francais, Italiano, Portugese, Russian

System Outputs:

Live HD (1920 x 1080p60):	DVI x 2
HD Stills (1920 x 1080p):	USB x 2
HD Printer:	USB x 2
MPEG 4 (H.264) Video:	USB x 2
RGB:	DB15 x 1
S-Video:	Y/C x 2

Dimensions/Weights:

Camera Head:	3"(L) x 1.72"(H) x 1.25"(W)
Camera Head:	8.95 oz
CCU Dimensions:	12"(W) x 12.5"(D) x 3.5"(H)
CCU Weight:	7.4 lb (3.35 kg)

Optional HD C-Mount Video Adapter Available for:

Global[®], Moeller[®], Zeiss[®]
Surgical Microscopes



Features:

- Independent Iris and Focus Control
- Horizontal and Vertical Centering
- C-Mount Orientation Clutch

Certifications:

This equipment is certified and manufactured in accordance with UL 60601-1 and CSA 22.2 No. 601. CE marked equipment has been tested and found to comply with the EMC limits for Medical Devices for the Medical Device Directive 93/42/EEC (EN 60601-1-2: 1993 Class A).

Warranty:

2 Years

HD Display & Projector Requirements:

1920 X 1080 (PC), WUXGA 1920 X 1200

HD Capture & Printer Requirements:

Compatible Mass Storage Device

Compatible HP[®], Sony[®] Printers & HD Capture Appliances



Windows
Vista
Compatible



Mac and the Mac logo are trademarks of Apple Computer, Inc., registered in the U.S. and other countries.
Microsoft, Windows, and the Microsoft logo are trademarks of Microsoft Computer, Inc., registered in the U.S. and other countries.
HP is a registered trademark of Hewlett-Packard Development Company, L.P. Sony is a registered trademark of Sony Corporation.
Global Surgical, Moeller and Zeiss are registered trademarks of their respective companies.
Features and specifications subject to change without notice.