



## MACROFIRE®

Monochrome

2048x2048P

### Research Grade Photomicrography

Macrofire® Monochrome is a progressive scan monochrome camera with a 500% increase in field-of-view developed for quantitative microscope image documentation and analysis.

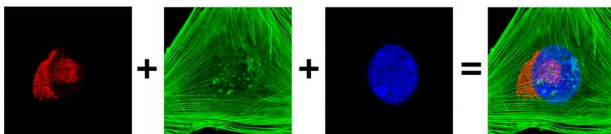
- **21.4mm Progressive Scan CCD**

Provides the microscopist with the largest field-of-view digitally as seen through the microscope oculars.

- **Exclusive Automated Control of Optional CRI Macro Color™ Filter**

Adds versatility and performance providing full CCD pixel utilization generating a high resolution RGB image from your monochrome camera.

Optronics® Automated RGB 3-Pass Color



- **4-Megapixel Imaging with 7.4 x 7.4 micron pixels**

Delivers exceptional image detail and dynamic range in both brightfield and low-light fluorescence images.

- **Point and Shoot Simplicity**

Images captured effortlessly in 12-bit high-resolution monochrome with 4X increased sensitivity - crucial for a wide range of quantitative imaging techniques.

- **Optronics Exclusive PictureFrame®**

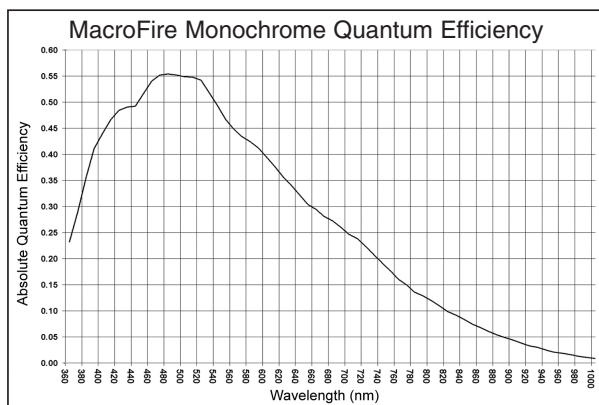
Comprehensive image processing suite with measurement and annotation, scale bar, AVI file-compliant time lapse imaging, automated image archiving and real-time pseudo coloring with six position image mixing functionality, flat field correction, background subtraction, live frame averaging with motion compensation and more...

# Technical Specifications

**MACROFIRE**

Monochrome

<b>Mechanical Specifications:</b>	( L x W x H ): 5.3 x 5.3 x 2.3 Inches
<b>CCD Array:</b>	2048 x 2048 pixels / Progressive scan interline CCD
<b>Pixel Size:</b>	7.4 x 7.4 micron pixels
<b>Well Depth:</b>	40,000 electrons
<b>Active Area:</b>	15.2mm x 15.2mm, 21.4mm diagonal
<b>Computer Interface:</b>	IEEE 1394 (FireWire®), 6 pin
<b>Software:</b>	Optronics® native application PictureFrame®, SDK available, Twain, Rincon™, Longboard™
<b>Optical Interface:</b>	F-mount
<b>Electronic Shutter:</b>	Integration time to 60 seconds
<b>Frame Rates:</b>	5 FPS @ 2048 x 2048 9 FPS @ 1024 x 1024 (2x2 binning) 12 FPS @ 680 x 680 (3x3 binning) 15 FPS @ 512 x 512 (4x4 binning) 18 FPS @ 408 x 408 (5x5 binning) 38 FPS @ 64 x 64 (subframed mode)
<b>Binning Modes:</b>	1 x 1, 2 x 2, 3 x 3, 4 x 4, 5 x 5
<b>Subframes Modes:</b>	64 - 2048 lines x 64 - 2048 columns
<b>Bit Depth:</b>	12-bit monochrome
<b>Spectral Response Curve:</b>	



**System Recommendations:** PC - 2 GHZ or better PC Running Windows® /2000/XP/Vista  
Graphics Display Board with 64MB Memory (min) 32-bit color 512 MB Ram  
MACINTOSH - G4 OS X Version 10.2 or better 512 MB Ram

**Warranty:** 2 Years

RGB Color Imaging Requires Optronics® CRI Macro Color™ Mount p/n S61353

FireWire® is a federally registered trademark owned by Apple Computer Inc.  
Kodak® is a federally registered trademark of Eastman Kodak Corp.  
Mac and the Mac logo are trademarks of Apple Computer, Inc., registered in the U.S. and other countries.  
Microsoft, Windows, and the Microsoft logo are trademarks of Microsoft Computer, Inc., registered in the U.S. and other countries.

*Monitor is for illustration purpose only. Sold separately.*



Windows  
Vista  
Compatible

