

## Lumen 300-LED

### Broad Spectrum White Light Fluorescence Excitation Illumination System



The new Lumen 300-LED is Prior Scientific's latest addition to their wide range of illumination products for microscopy.

The Lumen 300-LED unit is specifically designed to offer:

- Broad spectrum LED illumination for fluorescence applications\*.
- Fits directly to most microscopes.
- Simple to install and simple to use.
- Optional liquid light guide when there is a need to keep the source of illumination remote from the microscope.

- USB and TTL control

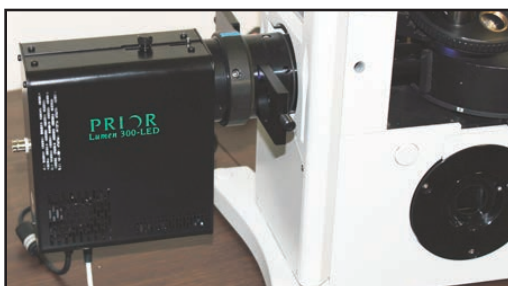
Environmentally friendly:

- No Mercury
- No special disposal regulations

The manual keypad controller offers:

- Instant on/off operation via TTL
- 0-100% intensity control in 1% increments.
- Independent brightness and on/off control for each LED.

\*Prior recommends that excitation filters are used with the Lumen 300-LED. Most existing filter sets will be compatible. Commercially available filters and filter sets can be purchased from Chroma, Omega and Semrock. Please visit [www.prior.com](http://www.prior.com) for more information on filter sets matched to the Lumen 300-LED.



**Inset Photo:**  
Lumen 300-LED unit attached to microscope.

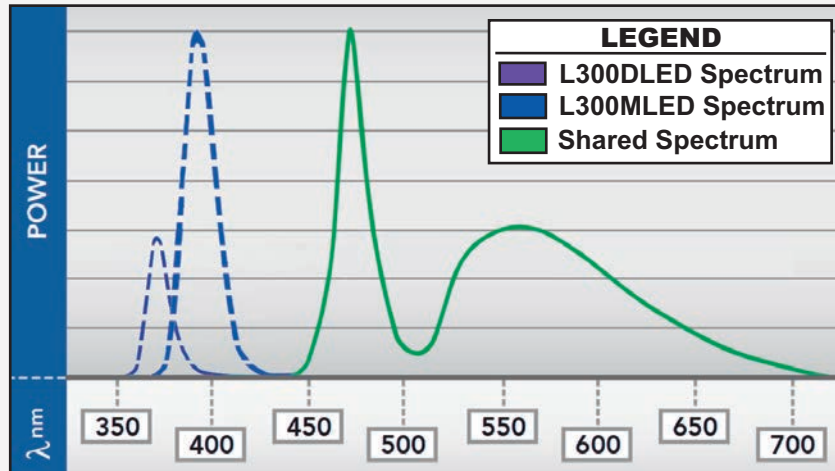
#### General Specifications

- Broad spectrum, high power white illumination
- Instant on/off operation
- Long lifetime (25,000 operating hours)
- Increased energy efficiency
- No shutters or ND Filters required
- Filter set compatibility, including DAPI
- Stable and repeatable
- TTL all on and all off triggering (<30  $\mu$ s)
- Fits all new and most modern microscopes
- Quiet operation
- USB for PC control

## Lumen 300-LED

Broad Spectrum White Light Fluorescence Excitation Illumination System

## Typical Lumen 300-LED White Performance Spectrum



Users of triple multiband filter sets should be aware that DAPI is excited at a longer Violet wavelength (400nm) than the normal UV band (365nm). This is caused by complications for the filter manufacturers in producing a single filter with three pass bands with the lowest one at 365nm. To match these triple multiband filters sets, the L300MLED should be used which has the DAPI excitation band positioned in the violet region, rather than the UV.

## How to Order the Lumen 300-LED Illumination System

## L300

LED Model

Wavelength Model

D = 365 nanometer for single band filter sets

M = 400 nanometer for multi band filter sets

DLG = 365 nanometer liquid light guide for  
single band filter setsMLG = 400 nanometer liquid light guide for  
multi band filter sets

Example Part Number: L300MNI

Part number L300MNI would be a Lumen 300 with Nikon  
microscope adapter for use with multi band filter sets.

Microscope Adapters

LC = Leica

LC31 = Leica MZ16/16F, MZFLIII, M205FA

MT72 = Motic AE31

MT71 = Motic BA400

NI = Nikon

NI22 = Nikon E200/TS100

NI27 = Nikon LV

OL = Olympus

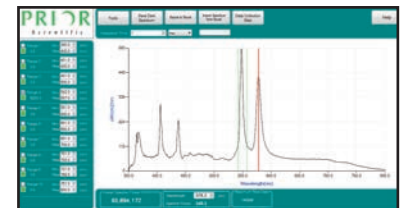
OL52 = Olympus BH2

ZS = Zeiss

ZS41 = Zeiss Standard

Also from Prior Scientific the NEW  
LumaSpec 800 Optical Power Meter

The LumaSpec 800 is a compact visible light optical power meter with additional quantitative spectral power data for microscope/optical system illumination systems. Data from 350nm to 800nm with 1.5 nanometer resolution is collected for characterizing and quantifying your illumination system.



**PRIOR**  
Scientific

Worldwide distribution



Prior Scientific Ltd  
Cambridge, UK

T. +44 (0) 1223 881711  
E. [uksales@prior.com](mailto:uksales@prior.com)

Prior Scientific Inc  
Rockland, MA, USA

T. +1 781-878-8442  
E. [info@prior.com](mailto:info@prior.com)

Prior Scientific GmbH  
Jena, Germany

T. +49 (0) 3641 675 650  
E. [jena@prior.com](mailto:jena@prior.com)

Prior Scientific KK  
Tokyo, Japan

T. +81-3-5652-8831  
E. [info-japan@prior.com](mailto:info-japan@prior.com)