

Excelis MPX

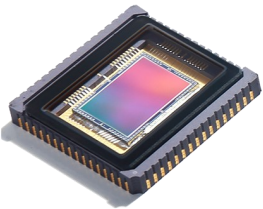
HIGH RESOLUTION MICROSCOPY CAMERA

The new *Excelis* MPX-20RC CMOS color microscopy camera delivers exceptional sensitivity in low-light situations. The deep-cooled sensor allows for long-lasting exposures with very low noise.

The revolutionary, feature-rich *CaptaVision+* software provides advanced camera controls, fluorescence acquisition, image formatting, measurements, report generation, plus more!



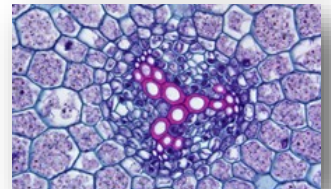
SONY Professional CMOS Sensor



The MPX-20RC uses a high-sensitivity, high-resolution Sony IMX183 CMOS with 2.4µm pixels, delivering 20.4MP (5472x3648 pixels) full-frame images.

Capture Every Detail

The MPX-20RC 20MP sensor captures even the finest detail in the specimen. The MPX-20RC is a superb, all-around color camera. Exceptional color rendition and high-sensitivity for low light-level fluorescence imaging.



Deep Cooling for CRISP Images

With -15°C thermoelectric cooling and superior electronic design, the MPX-20RC can capture images requiring long exposures with ultra-low noise.



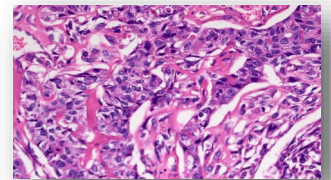
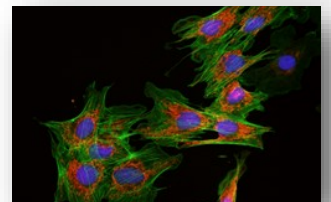
USB 3.0 High-Speed Transmission

USB 3.0 super-speed transmission interface is simple,

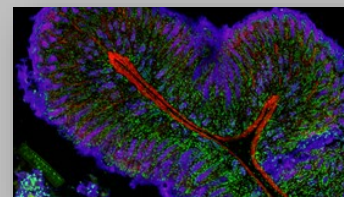
convenient and ensures a stable high-data transmission rate allowing fast-focusing at high resolution. Imaging can be performed at a rate of 53fps with 2x2 binning!

Feature-Rich *CaptaVision+* Imaging Software

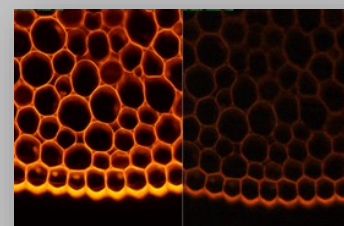
The innovative interface and workflow-based design redefines the image acquisition → editing → measurement → report output workflow process saving operating time and improving productivity.



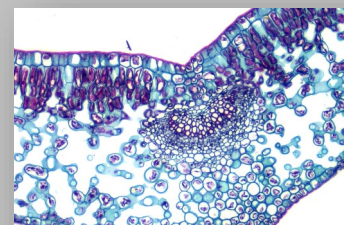
- 20MP Research-grade CMOS Camera
- Deep-cooling for maximum noise reduction
- High-speed USB 3.0 Image Transfer
- *CaptaVision+* Imaging Software



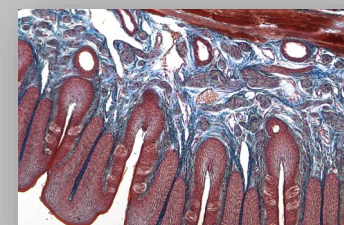
Capture fluorescence images with exquisite detail and sensitivity



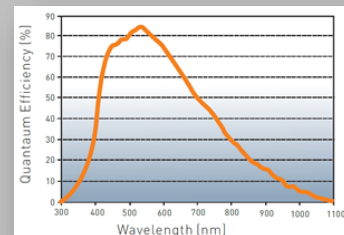
1200ms exposure using MPX-20RC (left) vs. popular Sony ICX285 CCD camera (right)



Brilliant color (dicot stem x.s.)



Superb detail (rabbit taste buds)



Quantum efficiency of MPX-20RC

CAMERA & SOFTWARE SPECIFICATIONS

Model	AU-20RC-CMOS
Sensor / Model	CMOS • Sony IMX183, color
Quantum Efficiency	84% @ 535nm
Sensor Size	1"; 1.0x C-mount (recommended)
Pixel Size	2.4µm x 2.4µm
Resolution	5472 (H) X 3648 (V)
Frame Rate	14FPS (5472x3648), 53fps (2736x1824), 67fps (1824x1216)
Shutter Mode	Rolling
Readout Noise	<1.0e-
Full Well Capacity	3000e- (HDR)
Bit Depth	16bit/8bit
Cooling	Forced air (Ambient at +25°C): -15°C
Binning	2x2, 3x3, 4x4
Exposure Mode / Time	Manual or Auto / 18µs—1hour
Operating Temperature / Humidity	0-40°C / 10%-85%
Camera Size & Weight	85x85x100mm / 980g
Data Interface	USB 3.0

CaptaVision+ Imaging Software (for PC/Windows and Mac OS)
 Live/still image measurement and annotation; flat field correction; camera cooling; extended depth of focus (focus stacking); image stitching; fluorescence image settings; fluorescence multi-color channel merge; HDR (High Dynamic Range) function
 Image Types: JPEG, PNG, TIFF, DICOM (DICOM not supported for Mac OS)

Windows 7, 8, and 10 (32/64 bit)
 Mac OS 10.14 or higher

System Requirements: Intel processor (Core i5 or higher); 8GB RAM or more; USB 3.0 Hi-speed port

PC Imaging Software
 (See additional features at right)

System Software Compatibility

CaptaVision+ Features

- Intelligent 12-bit ISP color reproduction
- Real-time depth-of-field fusion
- Real-time image stitching
- Real-time fluorescence image synthesis and editing
- HDR image synthesis
- Micro-imaging-based intelligent automatic exposure
- Intelligent flatfield correction based on dynamic calculation
- Smart measurement workflow
- Implements multiple iterations of workflow execution
- Supports single shot, delayed camera
- Automatic video and delay video generation
- Output format selection
- User parameter group save and load
- Dynamic / static measurement
- Layered measurement
- Customize measuring gauges, layers, precision, image naming, style, save location
- Data export as TXT or Excel
- Drawing tools: points, lines, rectangles, polygons, circles, arcs & angles
- Report generation and printing

Design, features and specifications are subject to change without notice.

ISO 9001

Design and production adheres to ISO9001 international quality standard.

ISO 14001

Design and production meets the requirements of international standard ISO 14001 for environmental management.

