

# Excelis MPX

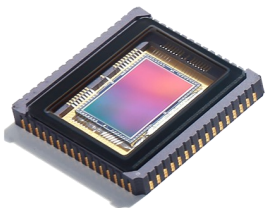
HIGH RESOLUTION MICROSCOPY CAMERA

The new *Excelis* MPX-20C CMOS microscopy cameras deliver exceptional performance in a compact, low-profile design.

The revolutionary, feature-rich *CaptaVision+* software provides real-time image stitching, real-time depth-of-field fusion, report generation & export, plus more!



## SONY Professional CMOS Sensor



The MPX-20C uses a Sony Exmor™ IMX-183 20MP 1" CMOS sensor with 2.4µm pixels. With a captured image resolution reaching 5472x3648 pixels, the MPX-20C resolves fine details from low to high magnifications.

## Advanced Rolling Shutter Technology

The rolling shutter of the MPX-20C provides very high resolution, excellent light sensitivity in a color camera, and high speed acquisition and read out ideally suited for microscopy imaging especially in brightfield and stereo applications.

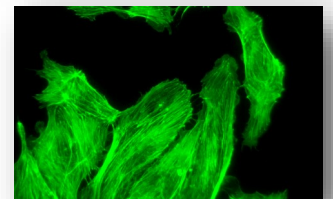
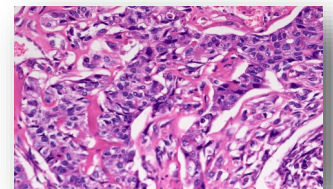


## USB 3.0 High-Speed Transmission

USB 3.0 super-speed transmission interface is simple, convenient and ensures a stable high-data transmission rate allowing fast-focusing at high resolution. Imaging can be performed at a rate of 15fps at full 20MP!

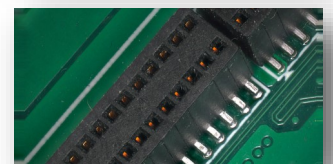
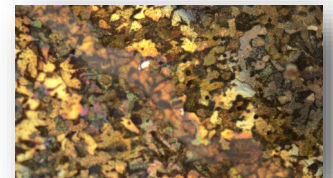
## Excellent Color Reproduction

The MPX-20C's core ISP color-interpolation algorithm effectively simulates the human eye's sensitivity to color. The colors in the image are true to the color seen in the eyepiece, whether it is a biological brightfield, stereo or fluorescence image.



## Feature-Rich *CaptaVision+* Imaging Software

The innovative interface and workflow-based design redefines the image acquisition → editing → measurement → report output workflow process saving operating time and improving productivity.



- 20MP CMOS Camera
- Ultra-high speed Image Transfer
- USB 3.0 Connectivity CaptaVision+ Imaging Software



### CAMERA & SOFTWARE SPECIFICATIONS

|                                  |   |
|----------------------------------|---|
| Model                            | AU-20C-CMOS   |
| Sensor / Model                   | CMOS • Sony IMX183CQJ-J                                       |
| Sensor Size                      | 1"; 1.0x C-mount (recommended)                                |
| Image Transmission               | High-speed  |
| Pixel Size                       | 2.4μm x 2.4μm   |
| Resolution                       | 5472 (H) X 3648 (V)   |
| Frame Rate                       | 15FPS (5472x3648), 53fps (2736x1824), 67fps (1824x1216)       |
| Shutter Mode                     | Rolling   |
| Exposure Time                    | 0.13ms—15s  |
| Automatic Settings               | Exposure, Color Scale, White Balance                          |
| Manual Settings                  | Exposure, Gain, Noise Reduction, Gamma, Flat Field Correction |
| Color Temperature                | 2000-15000K   |
| ADC Depth                        | 12Bit   |
| Operating Temperature & Humidity | 0-40°C  |
| Camera Size & Weight             | 68x68x46mm / 330g   |
| Data Interface                   | USB 3.0, compatible with USB 2.0                              |

#### PC Imaging Software

(See additional features at right)

**CaptaVision+** Imaging Software (for PC only; Mac OS not supported)  
Live/still image measurement and annotation; flat field correction; extended depth of focus (focus stacking); image stitching; fluorescence image settings; fluorescence multi-color channel merge; HDR (High Dynamic Range) function  
**Image Types:** JPEG, PNG, TIFF, DICOM  
Supports 4 cameras simultaneously in SDK

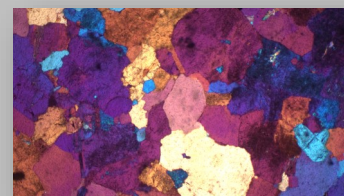
#### System Software Compatibility

Windows 7, 8, and 10 (64 bit)

**System Requirements:** Intel processor (Core i5 or higher); 8GB RAM or more; USB 3.0 port

### CaptaVision+ Features

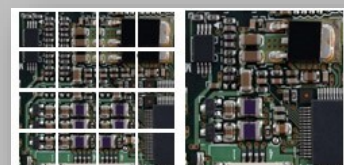
- Intelligent 12-bit ISP color reproduction
- Real-time depth-of-field fusion
- Real-time image stitching
- Real-time fluorescence image synthesis and editing
- HDR image synthesis
- Micro-imaging-based intelligent automatic exposure
- Intelligent flatfield correction based on dynamic calculation
- Smart measurement workflow
- Implements multiple iterations of workflow execution
- Supports single shot, delayed camera
- Automatic video and delay video generation
- Output format selection
- User parameter group save and load
- Dynamic / static measurement
- Layered measurement
- Customize measuring gauges, layers, precision, image naming, style, save location
- Data export as TXT or Excel
- Drawing tools: points, lines, rectangles, polygons, circles, arcs & angles
- Report generation and printing



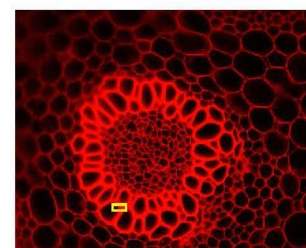
Outstanding color reproduction



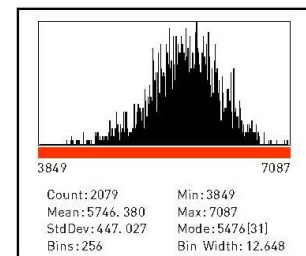
Real-time depth-of-field fusion



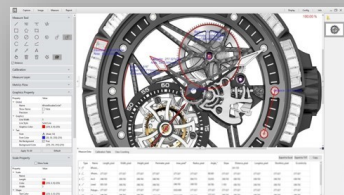
Real-time stitching can generate mosaic images while moving the stage



300x240 pixels, RGB:281K



Advanced noise reduction for fluorescence imaging



Innovative interface streamlines the image acquisition / editing / measurement & report output workflow process

Design, features and specifications are subject to change without notice.

#### ISO 9001

Design and production adheres to ISO9001 international quality standard.

#### ISO 14001

Design and production meets the requirements of international standard ISO 14001 for environmental management.

