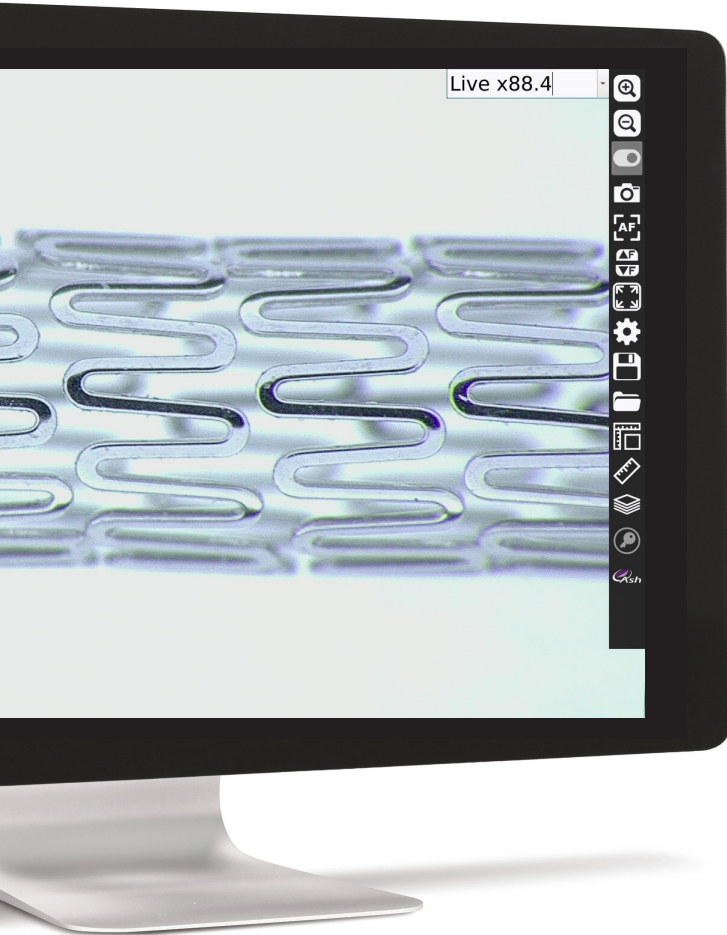


Digital Microscope and
Measurement System



INSPEX 3
Smart Inspection



INSPEX 3

Smart Inspection



Simply Smarter

INSPEX 3

Digital Microscope System

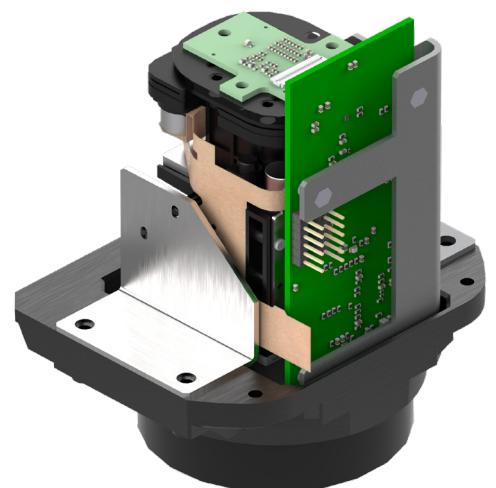
Inspex 3 is a powerful, flexible and intuitive HD digital microscope designed around ASH's new 30X HD Camera module.

This zoom camera module was designed by ASH to meet industrial inspection needs.

ASH has developed unique patented high-speed image processing algorithms deliver exceptional image quality, super-fast focus speed, and smooth digital zoom that makes inspection simpler, ergonomic and efficient.

Inspex 3 is ideal for industries such as medical device, pharma, precision engineering and electronics.

The benefits of the Inspex 3 system are clear to see.



INSPEX 3

Smart Inspection

New Features

Inspex 3 is the latest evolution from ASH. Incorporating the AshCam™ module with a wide range of additional and improved capabilities.

Superb Image Quality

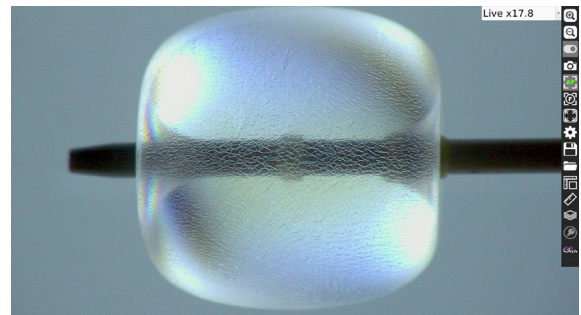
Experience unrivalled Full HD video imaging never seen before in an Ash system.

The Inspex 3 offers an enhanced, vibrant, crystal clear image for even the most demanding inspection applications.



Super Fast Auto-Focus

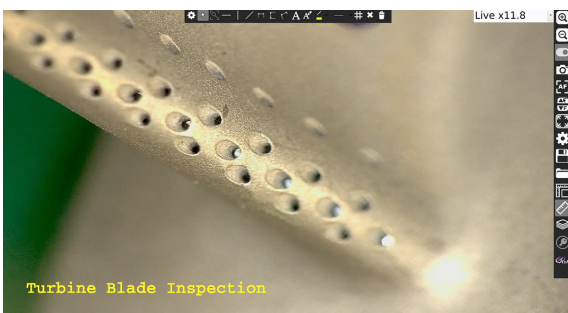
Place any part under the camera and it will immediately adjust the focus position allowing you to seamlessly inspect your part without having to adjust manual focus or change the height of the part.



Manual Rocker Focus

Automatically and rapidly adjust the focus using the rocker icon to inspect the area of interest on a sample part when in manual focus mode.

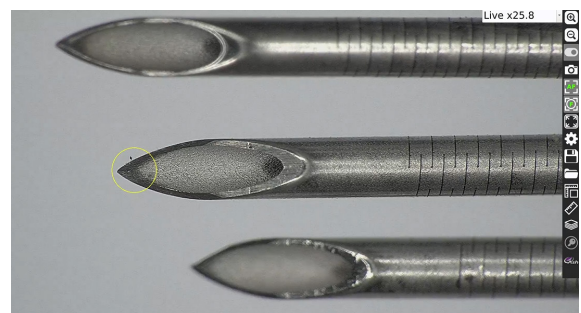
No need to manually adjust to change focus position.



SpotFocus™

Quickly focus on the area of interest by simply using the mouse pointer.

Improve accuracy and reduce human error with the capabilities of Spot Focus*



* Global patent applied for by ASH.

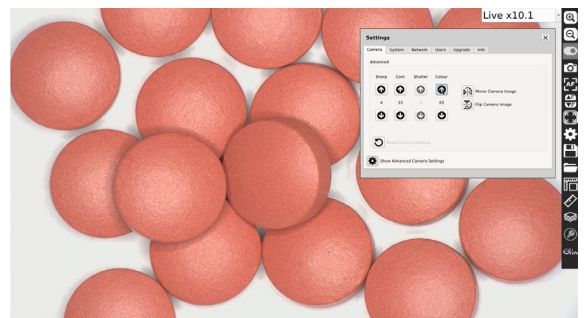
AshTruColour™ - True Colour Reproduction

View true colour reproduction of your sample with the InspeX 3. Replicate real colours as seen with the naked eye.



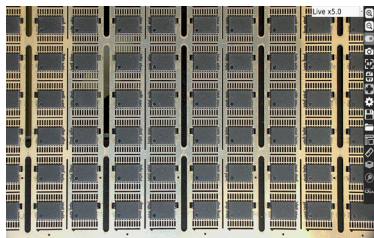
Advanced Camera Settings

The new Advanced Camera Settings give the user more power to enhance the image for a wide range of inspection and measurement capabilities.

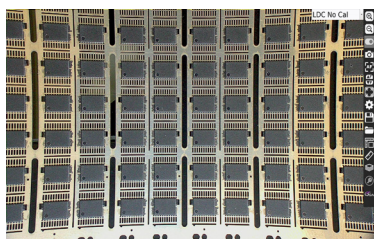


RTLDC™

Real-Time Lens Distortion Correction*. Lens distortion is inherent in all microscopes. Image distortion at the outer edges of large samples is automatically corrected by the InspeX 3.



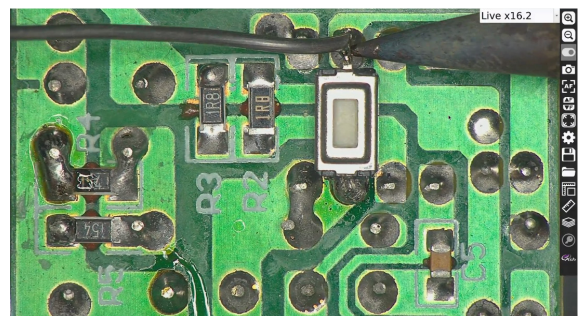
InspeX 3 RTLDC



Without RTLDC

No Video Latency

The video from the InspeX 3 has zero delay. It's 3x times faster. View parts in real time with no video lag, allowing you to comfortably inspect, rework, modify and assemble any part.



* Global Patent applied for by ASH.

INSPEX 3

The Inspex 3 maintains the following improved great features introduced with the hugely successful Inspex II.



AshCal™

Inspex 3 is factory calibrated before shipping. No time is wasted performing recalibrations between changing magnifications.



Image Stacking

Inspex 3 automatically captures several images at different focal depths to create a fully focused, sharp, clear image for easy inspection.



2D Measurement & Annotation

Point to point measurement and annotation of samples and creation of graticules.



Save to Network

Networking enables direct saving to the server or cloud for increased workflow efficiency.



User Privileges

User privilege settings enables operational control and traceability.



On Screen Preset Buttons

On Screen Preset Buttons allow quick access to pre-configured part-specific system settings.



Interchangeable Lighting

Multiple types of interchangeable lighting available, including Ring Light, DomeLight, Polarised Light and UV Light to address any inspection application.

INSPEX 3

is the latest evolution

AshCal™

Automatic Calibration
Tracking

Improved
Auto-Focus Speed

New! Spot Focus

Rocker Focus

No Video
Latency

Improved
Depth of Field

Improved
Sensitivity

Smooth
Magnification
Zoom

RTLDC™



Simply Smarter



PLUGIN
AND GO!



INSPEX 3

Digital Microscope System

Smart Inspection



Applications

- In Process Visual Inspection, Rework and Assembly of Component Parts
- Connected for Traceability and Documentation. Store images and data on the Cloud.
- Large Scale Inspection in a Production Environment
- Final QC Release Inspection

Industries

- Medical Device Manufacture
- Pharma
- Precision Engineering
- Electronics



Steven Martin, Dakin Flathers

Dakin Flathers

"The ease of use has meant that we have had no issues with operator engagement and everyone who we asked insists it has taken away any degree of uncertainty that was always evident in analogue checks.

From a personal point of view, right from the initial demonstration through to the after-sales service, I cannot fault the staff at ASH, who have gone over and above to assist however they have been able. Possibly the greatest testament to the unit is that other sections within the factory have seen the potential it brings and have begun making their own case to me for the purchase of additional units. I have to say, it is only a matter of time!"



Pádraig McVeigh, Creganna - TE Connectivity

Conductix Wampfler

"ASH supplied a digital microscope system to help assessment of tube finishes without major impact to the overall cycle of production. ASH have provided excellent support from problem classification, through vision system development, right to fixturing and set-up support.

The speed of the response and ability to meet our tight timeline was very impressive.

The availability and assistance from team members of all levels, from Sales to Engineering, was invaluable to our team!"



Roland Rucker, Quality Engineer Optoelectronics, Germany

Heraeus Noblelight GmbH

"Our goal was to acquire a microscope with the smallest possible surface differences between 5 and 500 microns without fatigue. Likewise, we wanted to create sharp images with the abnormalities and then surveying. The implementation of these requirements has now been confirmed in practice by our employees.

What also stands out is the intuitive user interface our employees were able to use within a very short time. The support from their side for commissioning and technical questions is also to be positively emphasized. We can highly recommend this microscope because of our positive experiences and you as a partner."





INSPEX 3

FI 806-001

System Components Included



LENSES

+5 Lens



LIGHTS

LED Ring Light



OTHERS

Wireless Keyboard and Mouse

USB Memory Stick

HDMI Cable

Optional System Components



LENSES

+5 Lens

AI 280-150

+10 Plan 1x Lens

AI 100-055

+25 Lens

AI 100-053

Ash 360 Rotating Viewer

AI 801-422

Polarising Lens (Analyser)

AI 100-041

Sub-Stage Polarising Film & Analyser

AI 801-835

Sub-Stage Polarising Film

AI 801-836

Polarised Ringlight & Analyser (58mm)

AI 801-423



LIGHTS

Diffused LED Dome Light

AI 100-045

UV Ring Light 367nm

AI 801-421

Polarised Ringlight & Analyser (58mm)

AI 801-423



CONTROLLERS

KPII External Keypad

FI 806-002

KIII External Keypad

FI 806-003



OTHERS

Ash PC Capture

AI 100-052

24" Monitor

AI 801-416

Hard Carry Case

AI 801-563



STANDS & STAGES

XY Stage for Uplight

AI 100-011

XY Stage

AI 100-010

Large XY Stage

AI 100-057

Illuminated Track Stand

AI 100-036

Track Stand

AI 100-037

Articulated Arm Stand

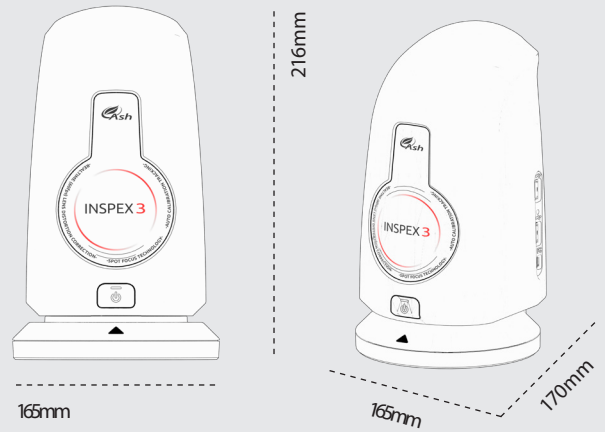
AI 100-039

Dual Arm Boom Stand

AI 100-038

INSPEX 3

Digital Microscope System



Magnification

Lens Type		5	10 Plan 1x	25
Optical	Magnification Range (X)	2.1 - 61.1	4.1 - 122.2	170 - 305
	X-axis FOV (mm)	240 - 8.34	80 - 4.1	3.5 - 1.75
	Y-axis FOV (mm)	135 - 4.69	71 - 2.2	1.75 - 0.9
Digital	Magnification Range (X)	61.1d - 123.2d	122.8d - 244.4d	330d - 640d
	X-axis FOV (mm)	8.34 - 4.13	4.15 - 2.08	1.65 - 0.85
	Y-axis FOV (mm)	4.69 - 2.32	2.32 - 1.16	0.9 - 0.5
	Working Distance (mm)	196	79	44
	Depth of Field (mm)	80 - 0.5	42 - 0.2	0.3 - 0.0015
	Video Latency (milli seconds)	20/17	20/17	20/17

Technical Specifications

	INSPEX 3
Zoom Range (with supplied +5 Lens)	2.1 - 123.2x
Camera Resolution	1920 x 1080 pixels
Monitor Connections	HDMI / DVI
Monitor Requirements	HD Ready / Full HD (Recommended)
Input / Output	HDMI Output USB 2.0 (x4 Ports) Mini USB Port General Purpose IO (x3 Ports) DC Power Jack 24V
Internal Storage	16GB
Image Capture	Internal Storage Removable USB Image Storage USB on the Go (PC Connectivity)
Power	24W
Dimensions	216mm x 165mm x 170mm
Weight	1.5kg
Operating Temperature	Storage -10°C to +60°C Operating +5°C to +40°C

www.ashvision.com

Authorized Dealer:

Meyer Instruments, Inc.
4202 Bear Lodge Court
Houston, TX 77084
281-579-0342
www.meyerinst.com

At Ash we design, develop and manufacture all our user centric solutions in-house and are proud of our award winning innovation process. We use creative Design Thinking to actively empathise with our customers to understand their real unmet needs and jobs to be done. We seek meaningful engagement and co-creation with our end users so we can develop the best possible solutions and services in the quality assurance industry resulting in cost savings, increased workflow efficiency, waste reduction and an overall improved quality process.

Contact Us

Ireland

ASH
B5, M7 Business Park,
Naas, Co. Kildare,
W91 P684, Ireland.
P: + 353-45-882212
F: + 353-45-882214

United Kingdom

ASH
Covert Farm,
Long Lane,
East Haddon,
Northamptonshire
NN6 8DU
UK
P: +44 (0)7592 523 767

E: info@ashvision.com
W: www.ashvision.com



reddot award
product design
winner

