

EXI-600

RESEARCH INVERTED MICROSCOPE

Laboratory

Research

Clinical

Education

Life Sciences

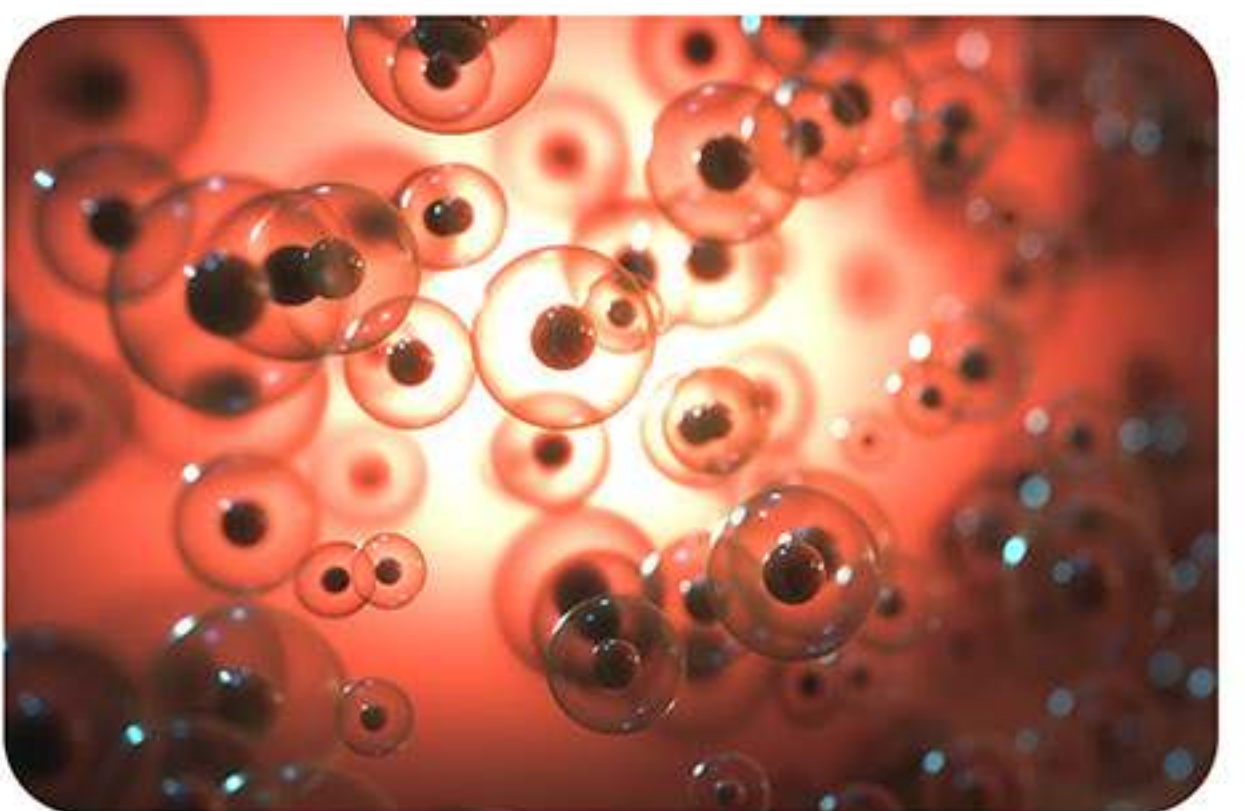
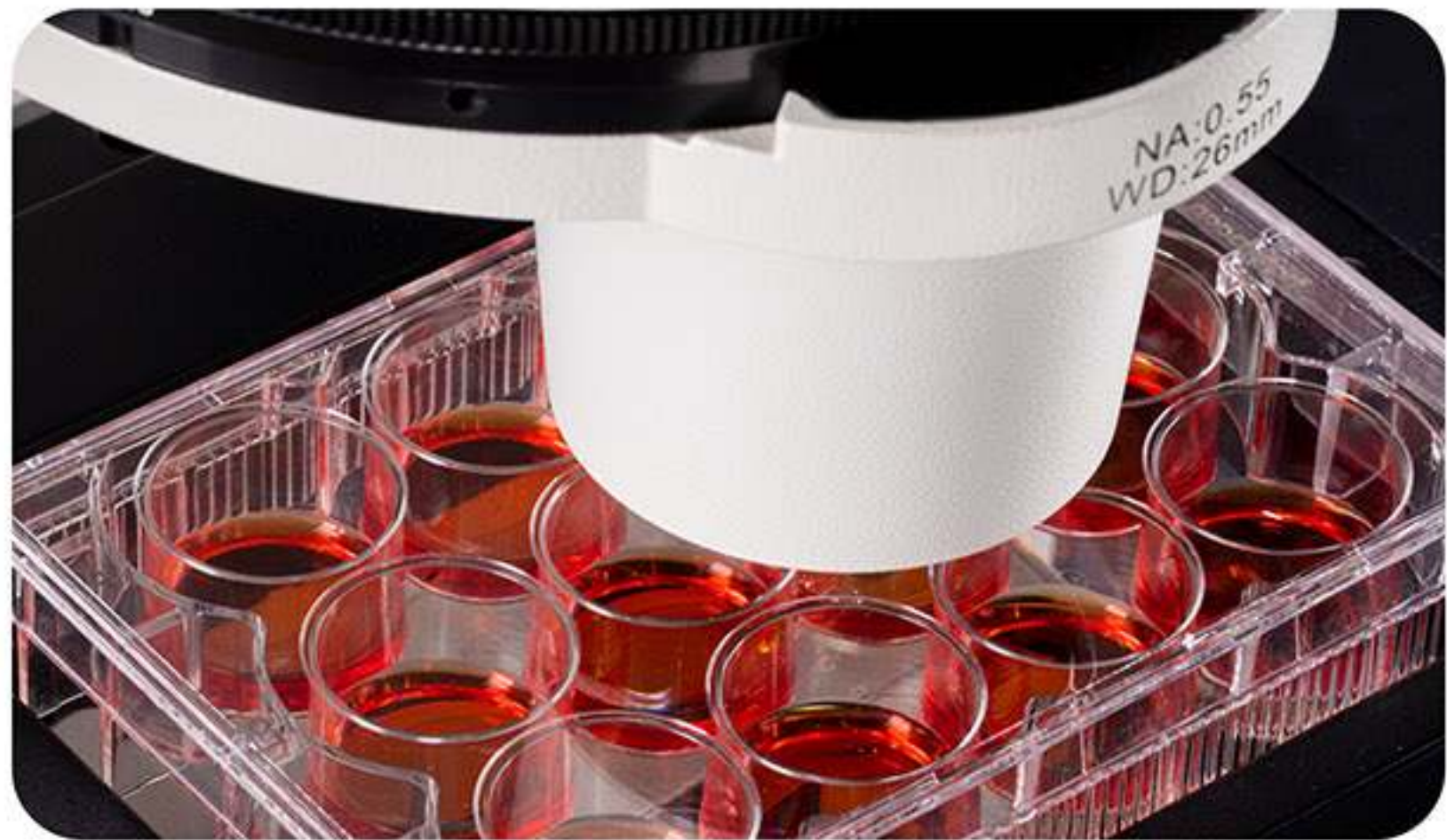
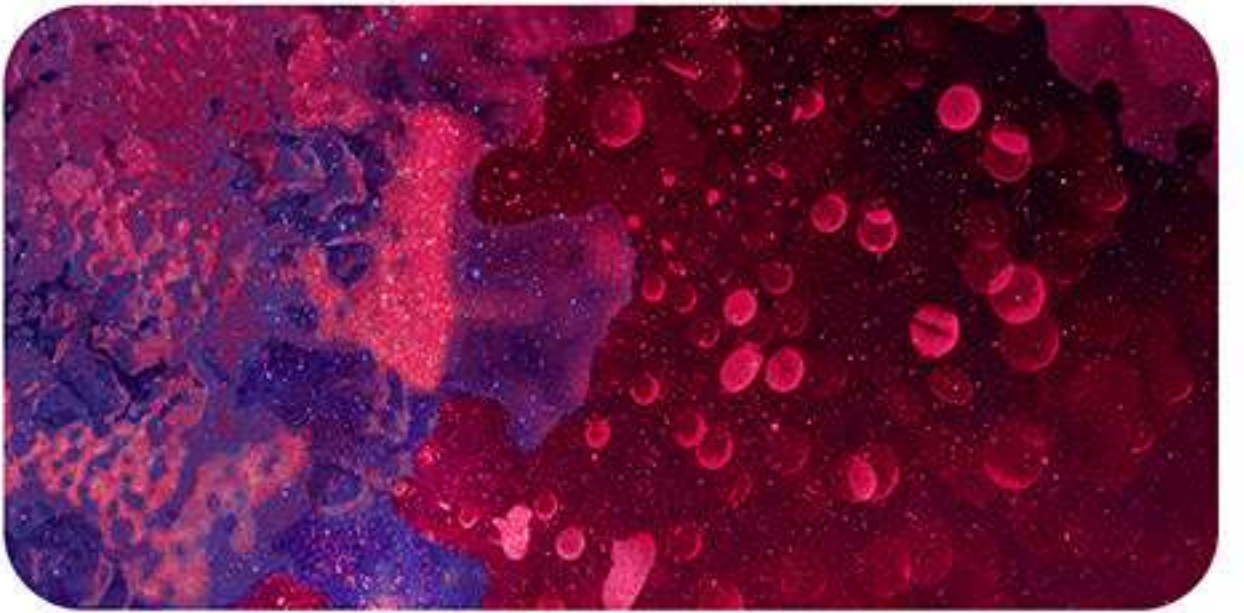
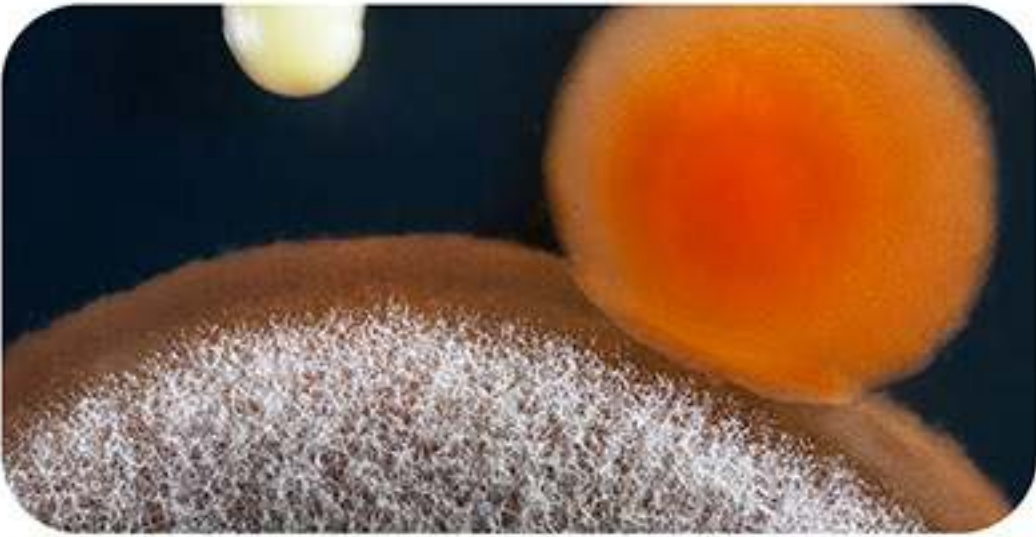
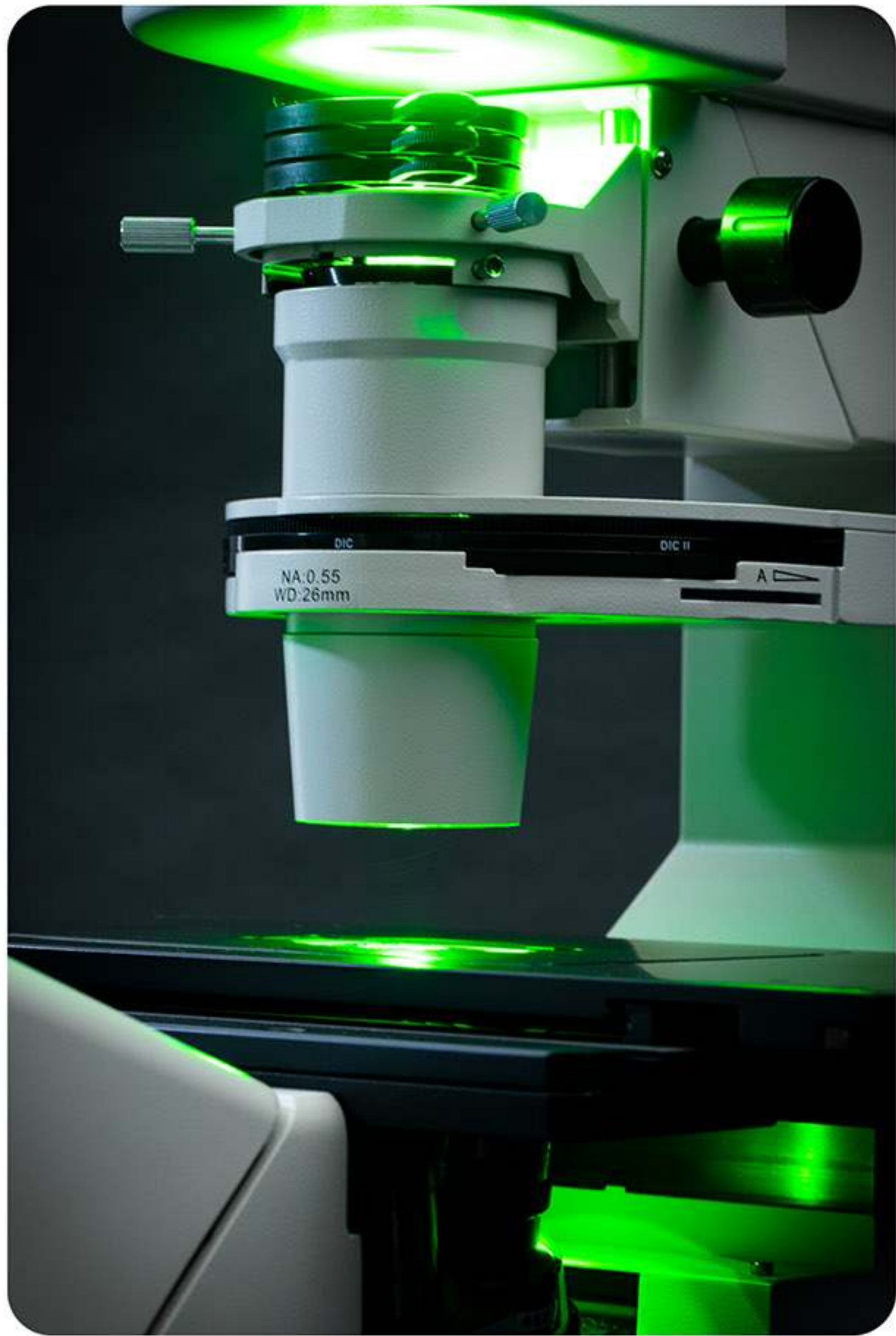


Empowering Discovery. Advancing Results.

As a market leader in quality microscopy and imaging solutions, Accu-Scope blends precision, performance and outstanding value like no other manufacturer can. We deliver superb yet affordable optical instrumentation and microscopy innovations that help advance the work, improve the outcomes and empower the achievements of the demanding professionals we're privileged to serve.

No matter your industry, discipline or individual endeavor, count on Accu-Scope microscopy, imaging solutions and accessories to exceed expectation as you achieve your goals. Market demands change and industries adapt, but our core principles never waver. More than any other provider, Accu-Scope combines best-in-class optical performance with visionary innovation to engineer instrumentation of exacting design at exceptionally affordable price points. We produce products that inspire, empower and advance our evolving understanding of the world — in science, medicine, industry, research and education. Bringing next-generation solutions to the present to enable better outcomes, today and tomorrow.





Solutions For Your Application.

EXI-600 Intelligent Manual
Inverted Microscope



6-Way Nosepiece

Intelligent sextuple nosepiece with click stops for precise positioning of the objective. Objective position is displayed on the LCD screen. A ball-bearing track provides smooth movement.



Phase Contrast

High contrast method for viewing unstained cells in culture. Phase contrast presents cells with a characteristic "halo" against a neutral background.



Filter Cube Turret

The intelligent 6-position fluorescence filter cube turret allows quick and easy filter cube changing, and the filter cube position is indicated on the LCD screen.



LCD Screen Display

The front-positioned, back-illuminated LCD screen displays objective, filter cube and light intensity setting.



Light Selector

Push-button switching from Transmitted Light to fluorescence Reflected Light.



3 Camera Ports

Top and side camera ports allow easy direct mounting of digital cameras.



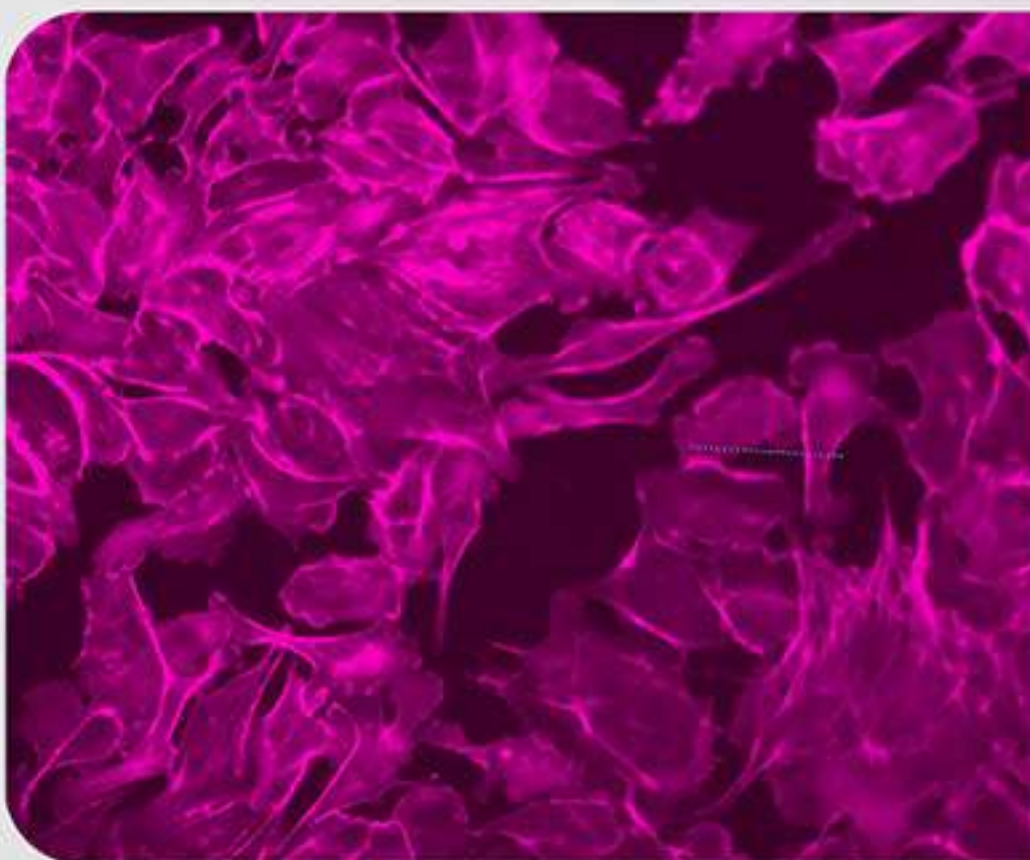
Fluorescence

With the EXI-600's core fluorescence components, just add a selection of third-party fluorescence accessories (e.g. light source, filter wheels, shutters) to customize the EXI-600 for your fluorescence imaging application.



Nomarski Differential Interference Contrast (DIC)

High resolution and high contrast observation method for viewing unstained, transparent specimens. Not suitable for use with plastic tissue culture vessels.



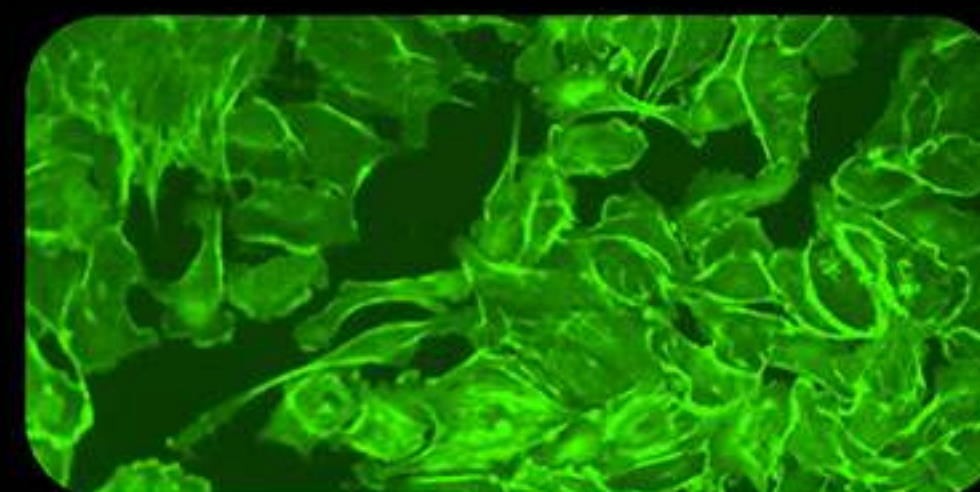
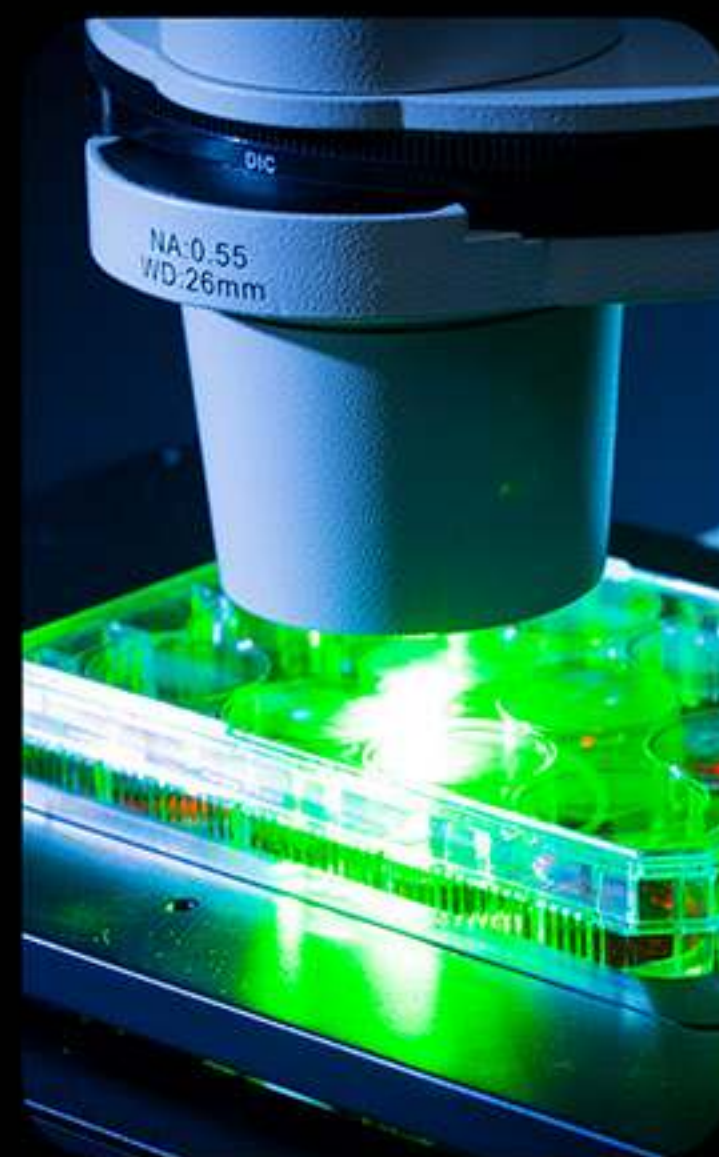
Modulation Contrast

High contrast technique for observing and manipulating live, unstained cells in culture. Compatible with plastic tissue culture vessels, and ideally suited for micromanipulation techniques.

Live Cell Imaging.



The modularity and stability of the EXI-600 make it an ideal platform for Live Cell Imaging. A variety of third-party accessories instantly transform the EXI-600 into an advanced multi-color fluorescence imaging solution. Choose from a selection of LED fluorescence illuminators, motorized XYZ components, filter wheels, antivibration tables, environmental chambers and cameras to perform techniques such as time-lapse imaging, Z-stacks, automatic scanning of well plates, stitching, and more.



Micromanipulation.

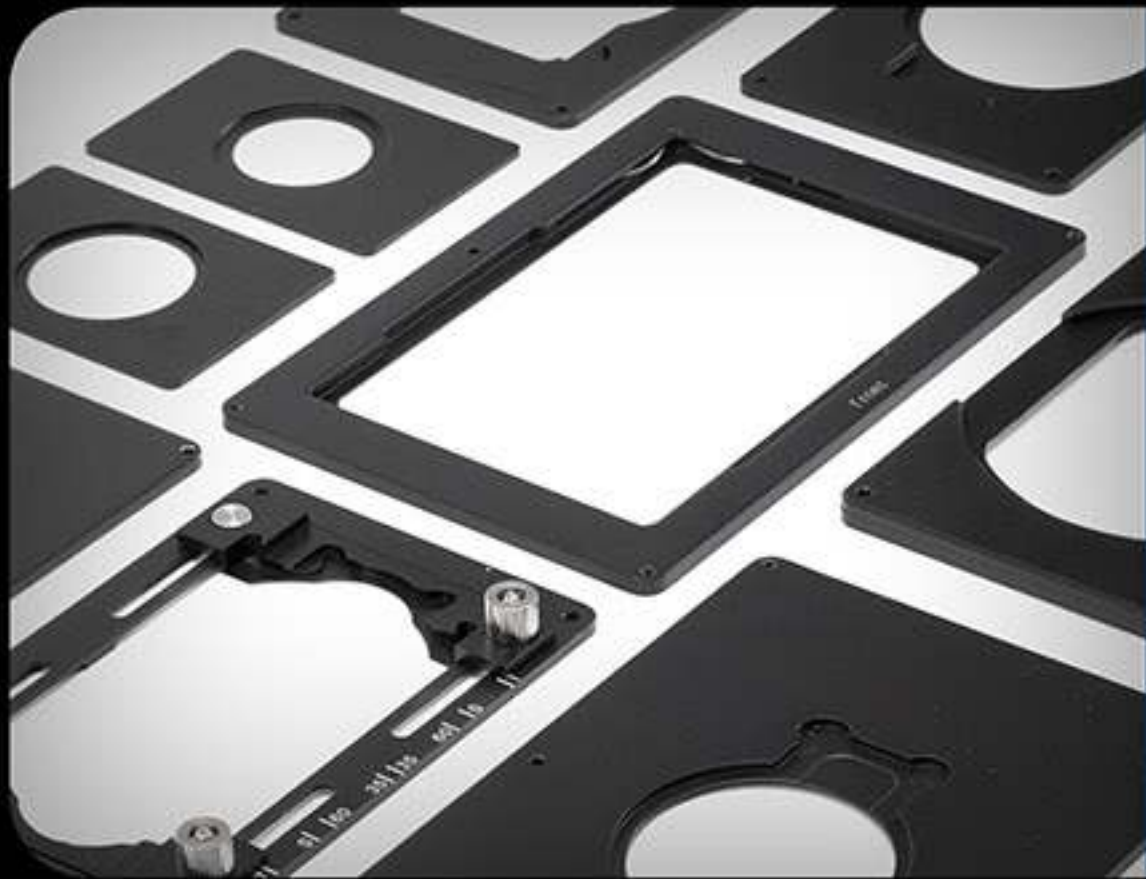


The EXI-600 is available with Phase Contrast, Nomarski DIC or Modulation Contrast observation methods. Attach rails, micromanipulators and microinjectors to the predrilled mounting holes to create an EXI-600 solution for IVF, stem cell and transgenic techniques. The EXI-600 is compatible with all third-party micromanipulation and microinjection components and accessories.



A Wide Variety of Accessories.

Customize your EXI-600 to meet any scientific project or workflow



Take Control of Sample Positioning with Our Precision Manual Stages

Our smooth moving, three-plate manual stages are available with either a short or long handle. Choose from a selection of stage inserts to match your specimen holder.



Optimize and Automate Your Imaging Experiments with Motorized Components.

Upgrade your EXI-600 with software-controllable and motorized XYZ components from Prior, Ludl, Sutter or ASI. Ideal for live cell imaging applications.



Hold, Sample and Inject with Solutions for Micromanipulation

Customize your EXI-600 to meet your specific needs for micromanipulation. The EXI-600 is compatible with micromanipulation solutions from Narishige, Eppendorf and Sutter.



Hold, Sample and Inject with Solutions for Micromanipulation

Customize your EXI-600 to meet your specific needs for micromanipulation. The EXI-600 is compatible with micromanipulation solutions from Narishige, Eppendorf and Sutter.



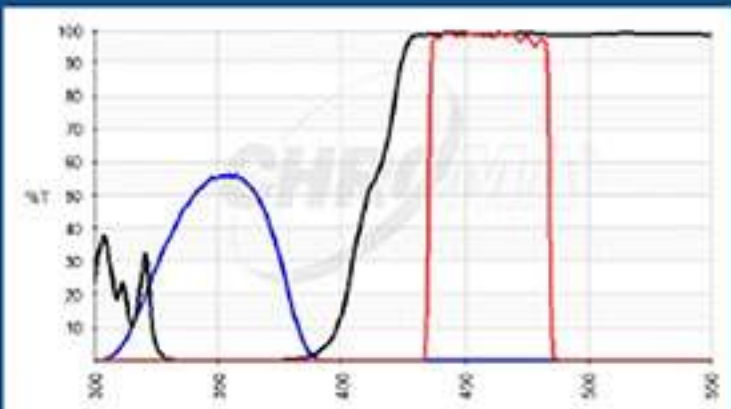
See More with Brilliant Fluorescence Illumination

Upgrade or extend the capability of the EXI-600 with fluorescence light sources and components. Our filter sets are engineered for optimal performance with today's LED and solid-state light sources from Excelitas, Lumencor and others.

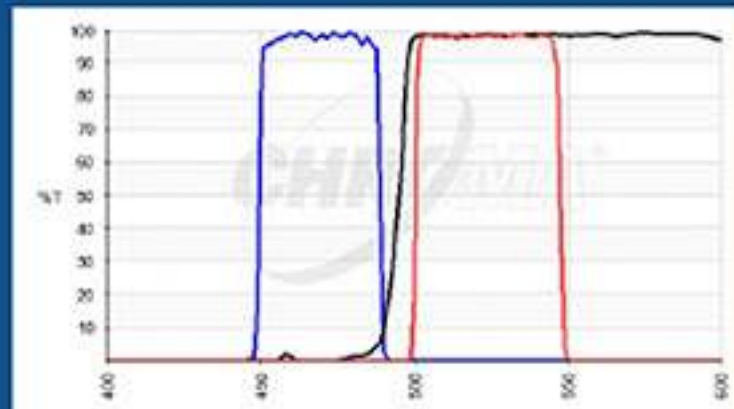


Capture, Measure and Share Your Results

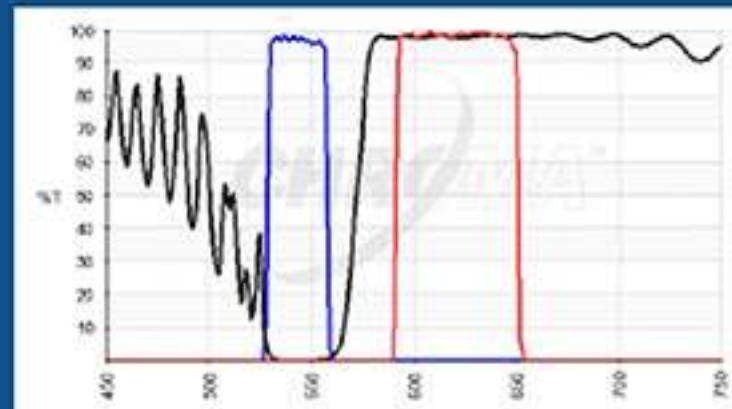
With three camera ports, the EXI-600 is ready to support your most demanding photomicrographic needs. Choose a camera from manufacturers including Photometrics, Hamamatsu, ACCU-SCOPE and others. Use our C-mount adapters will couple your cameras quickly and easily to the microscope.



DAPI



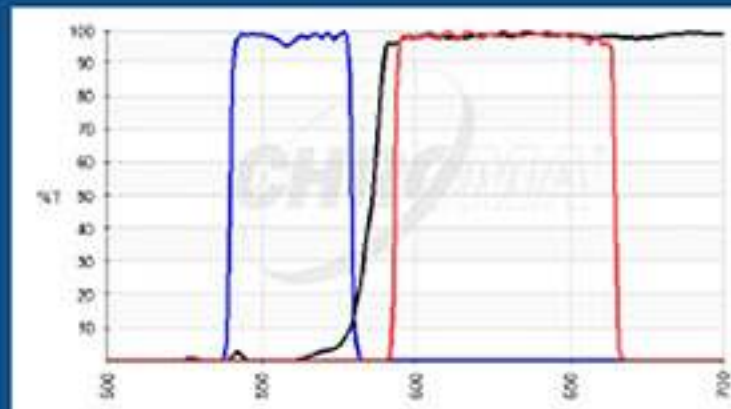
EGFP/FITC



Cv3/TRITC



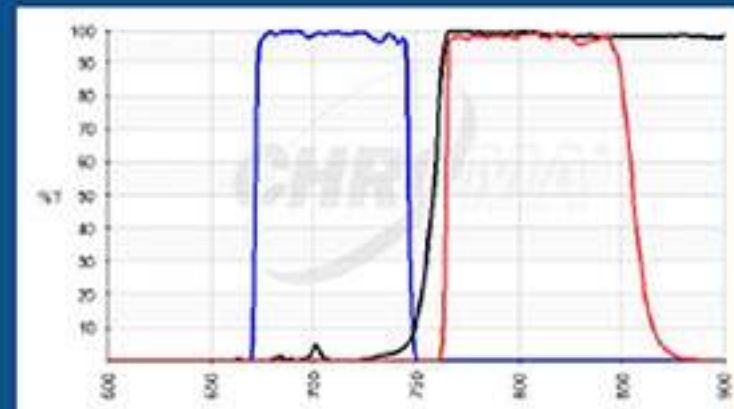
DSRED



mCherry/TxRed



Cy5



Cy7



Optics & Objectives

The key to quality images is in the optics. ACCU-SCOPE offers a range of Plan semi-Apochromatic objectives specifically selected for each of the contrast methods available for the EXI-600.



Brightfield/Fluorescence

Phase Contrast

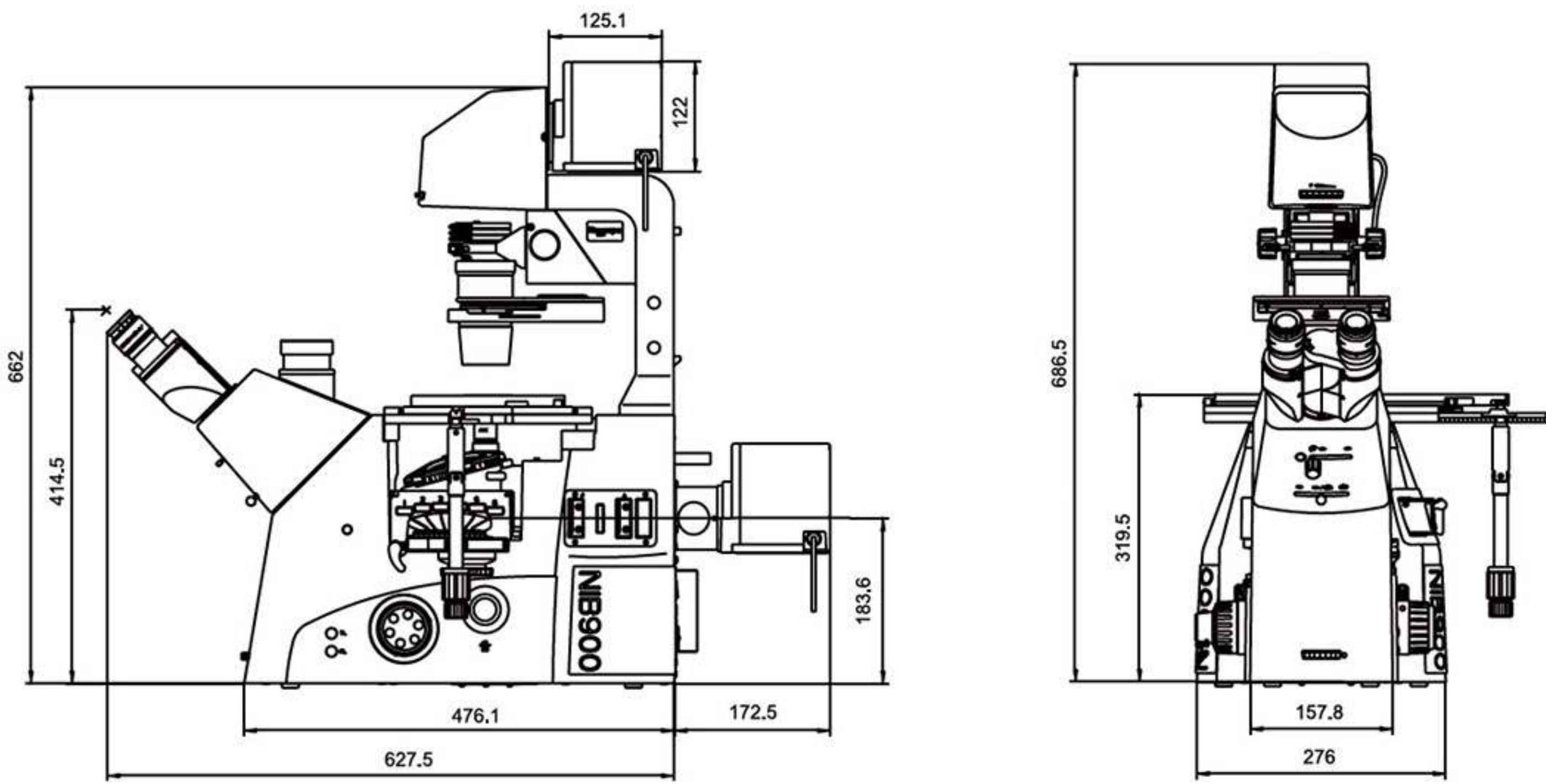
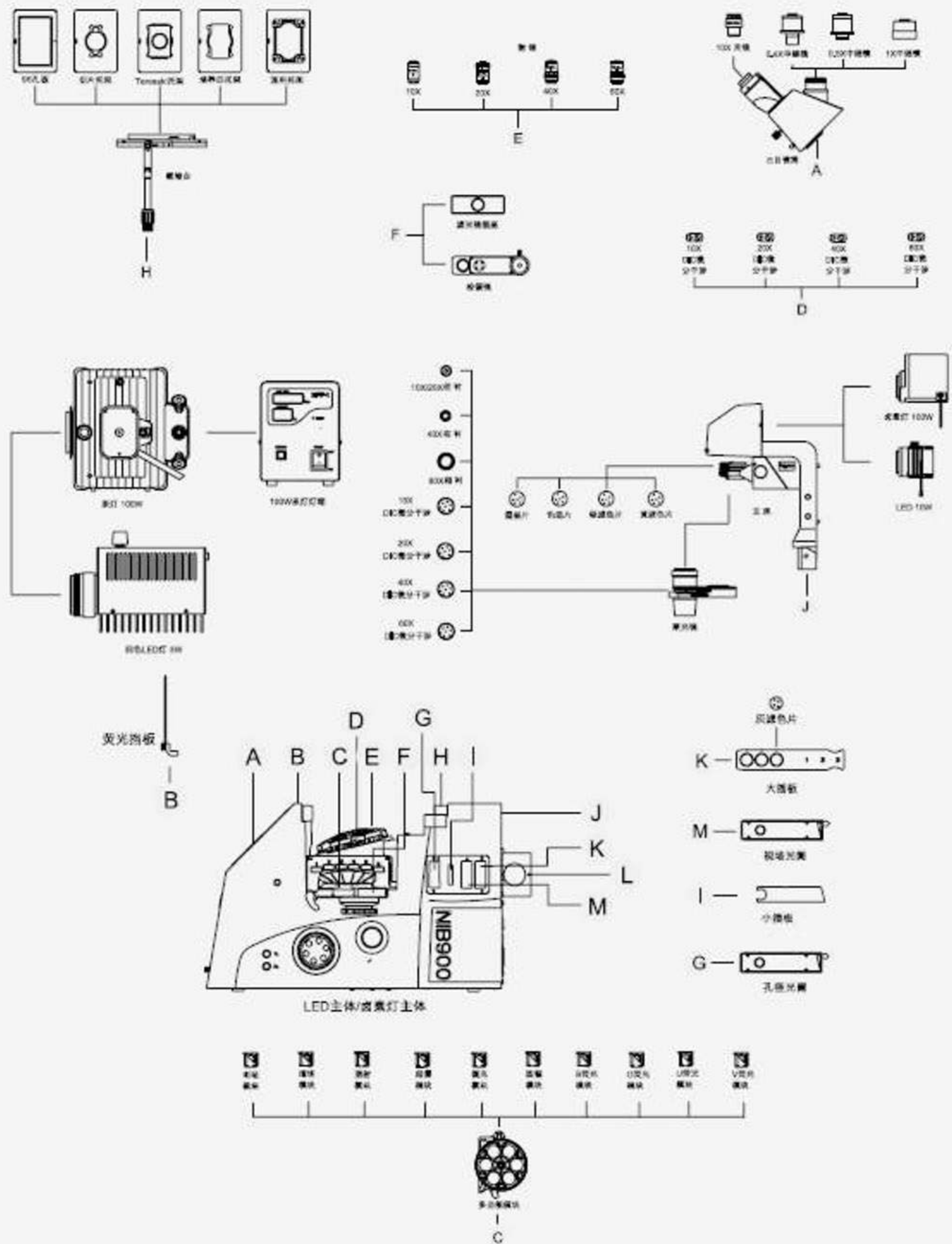
Modulation Contrast

	Immersion	NA	WD (mm)	Cover Glass Thickness (mm)	Correction Ring	Spring Loaded	Brightfield	Fluorescence	DIC	Phase Contrast	Modulation Contrast
4X s- APO		0.13	16.2	1.2			●	●	●		
10X s- APO		0.30	15.7	1.2		●	●	●	●		
20X s- APO		0.45	7.5-8.8	1.2	0-2mm	●	●	●	●		
40X s- APO		0.60	3.0-4.4	1.2	0-2mm	●	●	●	●		
4X s- APO PH		0.13		1.2			○	○		●	
10X s- APO PH		0.30		1.2		●	○	○		●	
20X s- APO PH		0.45		1.2	0-2mm	●	○	○		●	
40X s- APO PH		0.60		1.2	0-2mm	●	○	○		●	
4X s- APO MC		0.13		1.2							●
10X s- APO MC		0.30		1.2		●					●
20X s- APO M		0.45		1.2		●					●
40X s- APO MC		0.60		1.2		●					●



系统配置图 SYSTEM LAYOUT

用于 Nexcope NIB900 系列显微镜



EXI-600 SPECIFICATIONS		
Main Body	Optical System	Infinity Corrected NIS 60
	Eyepiece	SWF 10X/22
	Field Number	18 with C-mount
	Intermediate Magnification Switching	3-position manual switching 1.0X/1.5X/open
	Bertrand Lens	Manual in/out
	Output Port	4 Manual positions Eyepiece 100%, Left 100%, Right 80%, Top 80%
	Focusing Unit	Manual coarse/fine, 9mm movement range, 2mm/rotation coarse, 0.2mm/rotation fine
Tube Body	Trinocular Tube	Inclined 45°, built-in Bertrand lens, 47-78mm interpupillary range, camera port (field number 16)
Transmitted Illumination	Transmitted Illumination Pillar with LED lamphouse	xW LED, tiltable pillar, focusable/centerable condenser mount for Köhler alignment
Condenser	Condenser Turret	Long working distance (26mm), NA 0.55, 6-positions for phase contrast annuli, DIC and brightfield
	Modulation Contrast Turret	4-position, 40mm working distance, NA 0.6
Stage	Manual Stage	3-plate mechanical stage, 130x85mm moving range, short or flexible long handle, holders for 96-well plate, 1x3" slide, Terasaki plate, universal
Nosepiece	Intelligent Nosepiece	Sextuple nosepiece, DIC prism slots
Epi-fluorescence	Intelligent Epi-Fluorescence Filter Cube Turret	6-positions,
	Fluorescence Illuminator	Centerable/adjustable field diaphragm, aperture diaphragm, 3-position filter holder, blank slider
Operating Conditions	Temperature: 0°-40°, RH 60% maximum	



MICROSCOPY & IMAGING SOLUTIONS



WARNING

READ THE CORRESPONDING MANUAL CAREFULLY
TO ENSURE CORRECT USAGE OF ALL PRODUCTS

Copyright © 2021 ACCU-SCOPE Inc. Printed in the U.S.A.
ACCU-SCOPE Inc. reserves the right to change and improve specifications
without notice due to technological or manufacturing advances.