

Imaging Products for Pathologists and Researchers

The current many uses for digital images in pathology include Primary Diagnosis, consultation for second opinions, telepathology (teleconferencing with 'live' images), archiving, education and image analysis. This initially is what traditional scanners (or whole slide imagers, WSI) were thought to address. Unfortunately, the initial return on investment, hidden costs, service reliability and ease of use has not always worked for their successful implementation. Cytopathology, frozen sections and fine needle aspirations (FNA) are perfect candidates for a real-time telepathology solution, especially with live instantaneous remote control. The need to facilitate consultations between medical centers and outlying hospitals has never been greater! The need to improve patient care and assist with teaching residents and fellows is what this technology represents. **Meyer Instruments, Inc.** offers **LOW COST SOLUTIONS**. These include Real-time HD telepathology, traditional high capacity whole slide scanners, patented remote control scanner-microscopes, simple single slide scanners, manual stitching software and traditional microscopes, cameras and image analysis software. We now offer scanning using high dry and oil immersion 100x objectives!

For over 33 years Meyer Instruments has offered solutions for almost ANY pathology imaging application.



Our own **original PathScan Enabler 5** helped create the digital slide scanning market 23 years ago. The PSE was designed not to replace but *complement* a microscope and digital camera. The entire sample is scanned with an even, clear background and makes a perfect OVERVIEW image that can be viewed in a variety of software programs. Image scans are equivalent to a 4X objective microscope resolution. Low power overview scanning ONLY. Scans an entire sample (up to 36.5mm x 24.3mm) in seconds. *Registered US patent off.* (Requires Windows 10 CPU and HD monitor.)

***\$1,895.00**



The **uSCOPE MXII** is a small digital desktop scanner you can use in your workplace or home office. You can interactively browse slides with full control of focus, image processing and location. You can also scan regions of interest creating fully focused image sets. The industry-standard USB 2 interface makes it simple to plug in and start capturing images. Available with a single finite PI Ach 10x, 20x, 40x or 60x objective lenses. The uSCOPE MXII is a perfect inexpensive solution for low volume clinical work or research applications. (Requires fast Windows 10 CPU and HD monitor.)

***\$9,995.00**



The **uSCOPE HXII** is a small digital desktop scanner you can use in your workplace or home office. You can interactively browse slides with full control of focus, image processing and location. You can also scan regions of interest creating fully focused image sets. The industry-standard USB 2 interface makes it simple to plug in and start capturing images. Available with a single S-PI Apo 10x, 20x, 40x, 60x objective lens. (Requires fast Windows 10 CPU and HD Monitor.) *

\$13,495.00



The **GRUNDIUM OCUS** is a portable digital slide scanner you can use anywhere there is a WiFi or INTERNET connection. Its compact size, battery pack and wireless connectivity make the OCUS *truly* portable. It weighs only 3.5 kilograms and can fit in carry on luggage. The GRUNDIUM OCUS quickly stitches your specimen slides and saves them to an on board 500GB drive or anywhere you choose. Slides can be viewed in live mode on a large monitor. Whole Slide Imaging allows digital files to be viewed, managed and shared on a computer or shared in real-time with a colleague. The embedded GPU makes for fast scan times over an entire 1x3 inch slide area. Automatic focus for each slide area insures robust, detailed color correct images. The industry-standard 1GigE, 802.11ac WLAN connectivity makes it simple to plug and play. Available with a single 20x/0.4 or 40x/0.75 objective lens. Manual coarse focus and automatic macro overview camera creates a separate stunning low power image. Capture single or multiple regions of interest. (Requires Windows, Mac CPU or iPad and INTERNET.)
***\$15,000.00-\$18,000.00**



The **Bionovation CSFA350 Plus** is a dual (2) GPU enabled, high performance digital slide scanner capable of using both dry and **oil immersion** objectives. Imaging for *cytologists* is now possible. Automatic oil dropping. Ultra high-speed XYZ scanning. Two slide holder for both dry and oil immersion scans. 5 position manual revolving nosepiece. The Bionovation CSFA 350 Plus scans a 20 x 40mm area using a 100x/1.25 oil immersion objective in under 6 minutes! 75fps. 40x /0.65 dry lens in under 1 minute! Seamless picture stitching at up to 0.1 um resolution. Save images in multiple formats. Complete with Windows 10 CPU and monitor the built-in the dual Graphic Processor Units (GPU) creates digital images at up to 10 Gigabytes each. Complete with 40x/0.65, 60x/0.8, and 100x /1.25 oil lenses. Live view mode offers consultation with other pathologists. Optional objective lenses available.
***\$40,000.00**



The **Bionovation CSFA800 Basic** is a dual (2) GPU enabled, high performance digital slide scanner capable of using both dry and **oil immersion** objectives. Imaging for *cytologists* is now possible. Automatic oil dropping. Ultra high-speed XYZ scanning. Two slide holder for both dry and oil immersion scans. 5 position motorized revolving nosepiece. The Bionovation CSFA800 scans a 20 x 40mm area using a 100x oil immersion objective in under 3 minutes! 163 fps. Same area for 40x dry lens in under 30 seconds Seamless picture stitching at up to 0.1 um resolution. Save images in multiple formats. Complete with Windows 10 CPU and monitor the built-in the Quad Graphic Processor Units (GPU) creates digital images at up to 10 Gigabytes each. Cloud or major server storage space is a major requirement. Live view mode offers consultation with other pathologists. Automatically captures individual white blood cells for identification and review. Quantification on various morphometric indexes. Data saved in FACS 3.0 format. Finally a scanner optimized for cytologists!
***\$45,000.00**



The **EasyScan One FS LIVE** single slide scanner offers single slide scanning with **remote controllable** LIVE Real-Time HD display. Designed specifically for frozen sections and FNA's. Patent pending **continuous autofocus** nosepiece allows multiple objective use, including PI Ach 4x/0.10, S-PI Apo 10x/0.30, and PI Apo 20x/0.75 objectives. Quickly capture single planes or multiple image Z stacks. Fully automated scanning at an unbelievable price. Includes All-in-one Windows 10 PC with 24" HD monitor. Now available with 6 slide capacity!

***\$26,995.00 or \$42,695.00**



The **EasyScan One and Pro One** single slide scanners offer single slide scanning with all the features of our large capacity models. Four AUTOMATIC focus modes and S-PI Apo 10x/0.30, and Plan Apo 20x/0.75 objectives. Three place motorized nosepiece allows optional 40x objective use. Scan single planes or multiple image Z stacking. Fully automated scanning at an unbelievable price. Includes All-in-one Windows 10 PC with 24" HD monitor.

***\$17,495.00 - \$25,495.00**



The **EasyScan Pro 6** slide scanner offers batch processing of multiple slides with easy to use, intuitive software. Four AUTOMATIC focus modes and a high numerical aperture S-Plan Apo10x/0.30, Plan Apo 20x/0.75 and optional S-Plan Apo 40x/0.75 objectives with three place motorized nosepiece. Scan single planes or multiple image Z stacking. True one button walk away software control. Price includes all-in one computer with 4K display and operating software. Fully automated scanning. Optional FS-Live software for frozen sections and server software available. Our TOP selling model!

***\$37,495.00**



The **EasyScan Infinity 60** slide scanner offers high capacity scanning with high numerical aperture Plan Apo 10x/0.30, 20x/0.75 objectives. Three place motorized nosepiece allows multiple objective use. Scan single planes or multiple image Z stacking. True one button walk away software control. Price includes computer workstation, monitor and operating software. Includes server software. Fully automated scanning priced thousands below all competition!

***\$75,495.00**



The **EasyScan Infinity 100** slide scanner offers high capacity scanning with high numerical aperture S-Plan Apo 10x/0.30, 20x/0.75 objectives. Three place motorized nosepiece allows multiple objective use. Scan single planes or multiple image Z stacking. True one button walk away software control. Price includes high end computer workstation, monitor and operating software. Includes server software. Fully automated scanning priced thousands below all competition!

***\$93,495.00**



The **Glissando** slide scanner is an all in one scanner - computer designed to provide easy to use, fast, whole slide scanning of either one 50mm X 75mm whole slide or two 25mm X 75mm slides. The Glissando incorporates a single ultra-high resolution Plan Apo 20x/0.75 objective for scanning images at incredible detail. Visual magnification up to 750x is possible. Turboscan™ technology offers VERY fast scanning. 60 seconds for 15x15 mm area. Complete with integrated computer and separate HD monitor.

***\$42,795.00**



The **Glissando POL polarizing** slide scanner is an all in one scanner - computer designed to provide easy to use, fast, slide scanning of either geological or histological birefringent slides. Uses 1 x 2", 1 x 3" or 2 x 3" slides. The Glissando POL incorporates a single ultra-high resolution 20x /0.75 objective for scanning images at incredible detail. Visual magnification up to 750x is possible. Turboscan™ technology offers VERY fast scanning. Complete with integrated computer and separate HD monitor.

***\$43,995.00**



The **Image-Pro Turboscan™ FISH** Digital Pathology Slide Scanner was designed for ISH, IHC and fluorescent tissue-based research to support the diverse imaging needs of state of the art research facilities. The combination microscope-scanner is optimized for precision scanning of brightfield, phase contrast, polarizing and fluorescent samples, with the accuracy and resolution required for FISH. System scalability from one 1x3" or one 2x3" slide capacity with optional holder for four 1x3" slides. Z-stack capture for thick samples. Intuitive interface enables ease of use and adoption. 2-D scanning technology, ideal for co-localization studies. Broad range of compatible image analysis solutions also available. Scan 15mmx15mm @20x brightfield in 60 seconds!

***\$59,495.00**



The **PreciPoint M8** motorized scanner is unlike anything you've seen before. A digital microscope and slide scanner, specially designed for **instant** remote viewing of samples. The M8 can be used for robotic operation. Stitching is instantaneous as one moves seamlessly across the slide. Zoom from 1x to 750x without changing objectives. Ultra-high speed stage allows extremely fast '**concatenation**'. 'Touch screen' control feels like you're operating a microscope in real-time. No keyboard, no mouse, intuitive use, simple, ingenious. Perfect for FROZEN section and FNA consultations. Requires high performance computer.

***\$49,595.00**



The **PreciPoint O8** motorized scanner uses a Plan Apochromatic 100x/1.4 oil immersion objective! A digital microscope and slide scanner, specially designed for **instant** remote viewing of samples. The PreciPoint O8 was created to look at difficult to scan oil immersion specimens. Perfect for hematology and blood samples. Stitching is instantaneous as one moves seamlessly across the slide. Zoom from 1x to 1000x. Ultra-high speed stage allows extremely fast '**concatenation**'. High speed computer with touch screen supplied.

***\$68,999.00**



The **OptraSCAN OS-FL Fluorescence** scanner is an automated whole slide scanner with 15 sample slide capacity. A brightfield and fluorescence scanner, with five user changeable filters. Zoom from 1x to 750x without changing objectives. High speed stage allows extremely fast fluorescence scanning. Touch screen integrated computer control. No keyboard, no mouse, intuitive use, simple, ingenious. IMAGEPath Image Management system included for viewing, storage and archiving. Bar code enabled.

***\$78,000.00**



The **OptraSCAN** motorized scanner family including the **OS-FS**, **OS-15** and the **OS-120** line of multi-functional slide scanners. Use the OS-FS for Real-Time display of frozen sections and FNA's. OS-15 and OS-120 offer desktop scanning with 20x and 40x magnifications and 15 or 120 slide capacity. Touch screen integrated computer control. No keyboard, no mouse, intuitive use, simple, ingenious. IMAGEPath Image Management system included for viewing, storage and archiving. Bar code enabled.

***\$30,000.00 - \$35,000.00 - \$65,000.00**

Realtime Telepathology



The **Realtime Telepathology Imaging System (RTIS)** offers real time HD image streaming from the source microscope site to any location, worldwide, across the internet. By far the easiest to use consulting system we offer. Connect **DIRCECTLY** to the internet without going through a computer. HIPPA compliant and virtually no training necessary. Offered exclusively from Meyer Instruments, **RTIS** is the simplest, lowest cost consulting solution on the market today! (Requires microscope with 'C' mount and large display monitor.)

***\$9,950.00**

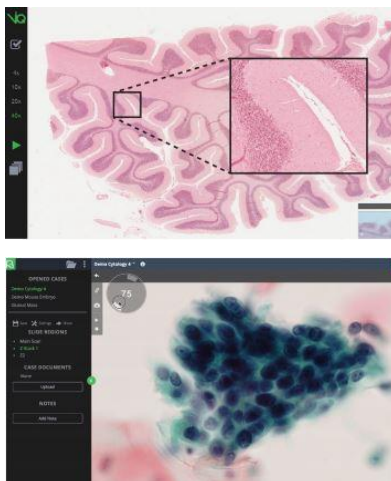
Macro Photography



The **PATHpix XLS** macro imaging system for anatomical gross pathology samples is every pathologists dream. Utilizing a high resolution camera, motorized zoom lens, optimized LED lighting, barcode reader and hands free foot switch controls this macro system fills a long overdue niche. Available with or without a computer workstation, the PATHpix XLS can be integrated with existing LIS systems and or our Realtime Telepathology Imaging System. Remote control is even possible with the latest addition to simplify gross photography. Retrofits to MOPEC grossing stations are also available.

***\$24,525.00**

Manual Stitching and Image Analysis Software



Both the **ACCU-SlideMS** and **Panoptiq™** are manual stitching slide solutions that integrate with your existing microscope. Specialized software and a unique camera lets you manually digitize your slides as you view them. With either dynamic slide mapping technology, you can create whole-slide images with your samples using your existing microscope and computer. Capture and embed high magnification regions of interest at up to 100x within your scans. Capture every cellular detail along the Z-axis with continuous EDF stacking capabilities to digitally replicate the focusing controls of a traditional microscope. All this in seconds not minutes! (Requires Windows 10 computer with solid state hard drive.)

***\$4,995.00 - \$10,650.00**



Image-Pro 10 is inexpensive image analysis software for pathologists and researchers. CAPTURE, PROCESS, COUNT, CLASSIFY, MEASURE AND SHARE. A powerful and customizable imaging platform driven by over 36 years of user feedback, Image-Pro 10 offers native 64-bit support, a user friendly interface and a suite of 25+ measurement solutions. Quantify pathology slide samples for percent area, intensity, size, amount and color.

***\$5,500.00 plus**

Microscopes and Cameras



Motic low cost, high performance microscopes and accessories compete head to head with Nikon, Olympus, Leica and Zeiss. Priced much lower with tilting Ergo tubes, discussion bridges and Plan Apochromatic lenses available make **Motic** worth considering. **Motic** offers all types of illumination including brightfield, fluorescence, polarization and phase contrast.

***\$1,195.00 - \$7,795.00**



ACCU-SCOPE offers research quality microscopes and accessories that compete head to head with Nikon, Leica, Olympus and Zeiss. Priced thousands lower with tilting trinocular Ergo tubes, discussion bridges and Plan Apochromatic lenses make them worth considering. **ACCU-SCOPE** offers all types of illumination including brightfield, fluorescence, polarized light and phase contrast. Capable of complete XYZ motorization for scanning unconventional slides.

***\$3,595.00 - \$29,995.00 plus**



Microscope cameras from manufactures including **Jenoptik, Lumenera, Optronics, Diagnostic, Dage-MTI** and **Motic** are available for all types of microscopy. Superb imaging capability from each of these companies allows pathologists and researchers the best available camera solutions. Low cost or high performance, brightfield or fluorescence capable, whatever you need we have.

***\$595.00 - \$9,500.00**

**Contact us today for more information, formal price quotations
or to arrange a web based demonstration!**

281-579-0342 www.meyerinst.com

**Pricing subject to change without notice. Installation, training, optional hardware, software and shipping are extra. Not all scanners come with computers. All scanners except the FS-Live are for research purposes only. US tariffs subject to change without notice.*